



Intel[®] Processor Identification and the CPUID Instruction

Application Note 485

September 2006

Document Number: 241618-031



INFORMATION IN THIS DOCUMENT IS PROVIDED IN CONNECTION WITH INTEL® PRODUCTS. NO LICENSE, EXPRESS OR IMPLIED, BY ESTOPPEL OR OTHERWISE, TO ANY INTELLECTUAL PROPERTY RIGHTS IS GRANTED BY THIS DOCUMENT. EXCEPT AS PROVIDED IN INTEL'S TERMS AND CONDITIONS OF SALE FOR SUCH PRODUCTS, INTEL ASSUMES NO LIABILITY WHATSOEVER, AND INTEL DISCLAIMS ANY EXPRESS OR IMPLIED WARRANTY, RELATING TO SALE AND/OR USE OF INTEL PRODUCTS INCLUDING LIABILITY OR WARRANTIES RELATING TO FITNESS FOR A PARTICULAR PURPOSE, MERCHANTABILITY, OR INFRINGEMENT OF ANY PATENT, COPYRIGHT OR OTHER INTELLECTUAL PROPERTY RIGHT. Intel products are not intended for use in medical, life saving, or life sustaining applications.

Intel may make changes to specifications and product descriptions at any time, without notice.

Designers must not rely on the absence or characteristics of any features or instructions marked "reserved" or "undefined." Intel reserves these for future definition and shall have no responsibility whatsoever for conflicts or incompatibilities arising from future changes to them.

The Intel® processors may contain design defects or errors known as errata which may cause the product to deviate from published specifications. Current characterized errata are available on request.

Contact your local Intel sales office or your distributor to obtain the latest specifications and before placing your product order.

Intel® 64 requires a computer system with a processor, chipset, BIOS, operating system, device drivers, and applications enabled for Intel 64. Processor will not operate (including 32-bit operation) without an Intel 64-enabled BIOS. Performance will vary depending on your hardware and software configurations. See <http://www.intel.com/info/em64t> for more information including details on which processors support Intel 64, or consult with your system vendor for more information.

Not all specified units of this processor support Thermal Monitor 2 and Enhanced Intel SpeedStep® Technology. See the Processor Spec Finder at <http://processorfinder.intel.com> or contact your Intel representative for more information.

† Hyper-Threading Technology requires a computer system with an Intel® Pentium® 4 processor supporting Hyper-Threading Technology and an HT Technology enabled chipset, BIOS and operating system. Performance will vary depending on the specific hardware and software you use. See <http://www.intel.com/info/hyperthreading/> for more information including details on which processors support HT Technology.

± Intel® Virtualization Technology requires a computer system with a processor, chipset, BIOS, virtual machine monitor (VMM) and for some uses, certain platform software, enabled for it. Functionality, performance or other benefit will vary depending on hardware and software configurations. Intel Virtualization Technology-enabled VMM applications are currently in development.

Intel, Pentium, Celeron, Itanium, Intel NetBurst, Intel Xeon, Pentium II Xeon, Pentium III Xeon, Intel SpeedStep, OverDrive, MMX, Intel486, Intel386, IntelDX2, Intel Core, and the Intel logo are trademarks or registered trademarks of Intel Corporation or its subsidiaries in the United States and other countries.

*Other names and brands may be claimed as the property of others.

Copyright © 1993—2006, Intel Corporation



Contents

1	Introduction	11
1.1	Update Support	11
2	Detecting the CPUID Instruction	13
3	Output of the CPUID Instruction	15
3.1	Standard CPUID Functions	17
3.1.1	Vendor-ID and Largest Standard Function (Function 0)	17
3.1.2	Feature Information (Function 1)	17
3.1.2.1	Processor Signature	17
3.1.2.2	Composing the Family, Model and Stepping (FMS) values	22
3.1.2.3	Feature Flags	23
3.1.2.4	SYSENTER/SYSEXIT – SEP Features Bit	27
3.1.3	Cache Descriptors (Function 2)	27
3.1.3.1	Pentium® 4 Processor, Model 0 Output Example	30
3.1.4	Processor Serial Number (Function 3)	31
3.1.5	Deterministic Cache Parameters (Function 4)	31
3.1.5.1	Cache Sharing Among Cores and Threads	32
3.1.6	MONITOR / MWAIT Parameters (Function 5)	32
3.1.7	Digital Thermal Sensor and Power Management Parameters (Function 6)	33
3.1.8	Reserved (Function 7)	34
3.1.9	Reserved (Function 8)	34
3.1.10	Direct Cache Access (DCA) Parameters (Function 9)	34
3.2	Extended CPUID Functions	34
3.2.1	Largest Extended Function # (Function 80000000h)	34
3.2.2	Extended Feature Bits (Function 80000001h)	34
3.2.3	Processor Name / Brand String (Function 80000002h, 80000003h, 80000004h)	35
3.2.3.1	Building the Processor Name	36
3.2.3.2	Displaying the Processor Name	37
3.2.4	Reserved (Function 80000005h)	37
3.2.5	Extended L2 Cache Features (Function 80000006h)	37
3.2.6	Reserved (Function 80000007h)	38
3.2.7	Virtual and Physical address Sizes (Function 80000008h)	38
4	Processor Serial Number	39
4.1	Presence of Processor Serial Number	39
4.2	Forming the 96-bit Processor Serial Number	40
5	Brand ID and Brand String	41
5.1	Brand ID	41
5.2	Brand String	41
6	Usage Guidelines	43

7	Proper Identification Sequence.....	45
8	Usage Program Examples.....	47
9	Alternate Method of Detecting Features.....	49
10	Denormals Are Zero.....	51
11	Operating Frequency.....	53
12	Program Examples.....	55



Figures

Figure 2-1. Flag Register Evolution	13
Figure 3-1. CPUID Instruction Outputs	16
Figure 3-2. EDX Register after RESET	17
Figure 3-3. Processor Signature Format on Intel386™ Processors.....	19
Figure 7-1. Flow of Processor <code>get_cpu_type</code> Procedure	46
Figure 8-1. Flow of Processor Identification Extraction Procedure	47

Tables

Table 3-1. Processor Type (Bit Positions 13 and 12)	18
Table 3-2. Intel386™ Processor Signatures.....	19
Table 3-3. Intel486™ and Subsequent Processor Signatures	20
Table 3-4. Feature Flag Values Reported in the EDX Register.....	23
Table 3-5. Feature Flag Values Reported in the ECX Register.....	26
Table 3-6. Descriptor Formats	28
Table 3-7. Descriptor Decode Values	28
Table 3-8. Pentium® 4 Processor, Model 0 with 256 KB L2 Cache CPUID (EAX=2) Example Return Values	31
Table 3-9. Deterministic Cache Parameters.....	31
Table 3-10. MONITOR / MWAIT Parameters	33
Table 3-11. Digital Thermal Sensor and Power Management Parameters.....	33
Table 3-12. DCA parameters	34
Table 3-13. Largest Extended Function.....	34
Table 3-14. Extended Feature Flag Values Reported in the EDX Register	35
Table 3-15. Extended Feature Flag Values Reported in the ECX Register	35
Table 3-16. L2 Cache Details	37
Table 3-17. Virtual and Physical Address Size Definitions.....	38
Table 5-1. Brand ID, CPUID (EAX=1) Return Values in EBX (bits 7 through 0)	42
Table 5-2. Processor Brand String Feature	42

Examples

Example 1. Building the Processor Brand String.....	36
Example 2. Displaying the Processor Brand String	37
Example 3. Processor Identification Extraction Procedure.....	55
Example 4. Processor Identification Procedure in Assembly Language	64
Example 5. Processor Identification Procedure in the C Language	84
Example 6. Instruction Extension Detection Using Exception Handlers	92
Example 7. Detecting Denormals-Are-Zero Support	95
Example 8. Frequency Calculation	98

Revision History

Revision	Description	Date
-001	Original Issue.	05/93
-002	Modified Table 3-3 Intel486™ and Pentium® Processor Signatures.	10/93
-003	Updated to accommodate new processor versions. Program examples modified for ease of use, section added discussing BIOS recognition for OverDrive® processors and feature flag information updated.	09/94
-004	Updated with Pentium Pro and OverDrive processors information. Modified, Table 3-2, and . Inserted Table 3-5. Feature Flag Values Reported in the ECX Register , , . Inserted Sections 3.4. and 3.5.	12/95
-005	Added Figure 2-1 and Figure 3-2. Added Footnotes 1 and 2. Modified. Added Assembly code example in Section 4. Modified Tables 3, 5 and 7. Added two bullets in Section 5.0. Modified cpuid3b.ASM and cpuid3b.C programs to determine if processor features MMX™ technology. Modified Figure 6.0.	11/96
-006	Modified Table 3. Added reserved for future member of P6 family of processors entry. Modified table header to reflect Pentium II processor family. Modified Table 5. Added SEP bit definition. Added Section 3.5. Added Section 3.7 and Table 9. Corrected references of P6 family to reflect correct usage. Modified cpuid3a.asm, cpuid3b.asm and cpuid3.c example code sections to check for SEP feature bit and to check for, and identify, the Pentium II processor. Added additional disclaimer related to designers and errata.	03/97
- 007	Modified Table 2. Added Pentium II processor, model 5 entry. Modified existing Pentium II processor entry to read "Pentium II processor, model 3". Modified Table 5. Added additional feature bits, PAT and FXSR. Modified Table 7. Added entries 44h and 45h. Removed the note "Do not assume a value of 1 in a feature flag indicates that a given feature is present. For future feature flags, a value of 1 may indicate that the specific feature is not present" in section 4.0. Modified cpuid3b.asm and cpuid3.c example code section to check for, and identify, the Pentium II processor, model 5. Modified existing Pentium II processor code to print Pentium II processor, model 3.	01/98
- 008	Added note to identify Intel® Celeron® processor, model 5 in section 3.2. Modified Table 2. Added Celeron processor and Pentium® OverDrive® processor with MMX™ technology entry. Modified Table 5. Added additional feature bit, PSE-36. Modified cpuid3b.asm and cpuid3.c example code to check for, and identify, the Celeron processor.	04/98
-009	Added note to identify Pentium II Xeon™ processor in section 3.2. Modified Table 2. Added Pentium II Xeon processor entry. Modified cpuid3b.asm and cpuid3.c example code to check for, and identify, the Pentium II Xeon processor.	06/98
-010	No Changes	



Revision	Description	Date
-011	Modified Table 2. Added Celeron processor, model 6 entry. Modified cpuid3b.asm and cpuid3.c example code to check for, and identify, the Celeron processor, model 6.	12/98
-012	Modified Figure 1 to add the reserved information for the Intel386 processors. Modified Figure 2. Added the Processor serial number information returned when the CPUID instruction is executed with EAX=3. Modified Table 1. Added the Processor serial number parameter. Modified Table 2. Added the Pentium III processor and Pentium III Xeon processor. Added Section 4 "Processor serial number". Modified cpuid3a.asm, cpuid3b.asm and cpuid3.c example code to check for and identify the Pentium III processor and the Pentium III Xeon processor.	12/98
-013	Modified Figure 2. Added the Brand ID information returned when the CPUID instruction is executed with EAX=1. Added section 5 "Brand ID". Added Table 10 that shows the defined Brand ID values. Modified cpuid3a.asm, cpuid3b.asm and cpuid3.c example code to check for and identify the Pentium III processor, model 8 and the Pentium III Xeon processor, model 8.	10/99
-014	Modified Table 4. Added Celeron processor, model 8	03/00
-015	Modified Table 4. Added Pentium III Xeon processor, model A. Modified , Added the 8-way set associative 1M, and 8-way set associative 2M cache descriptor entries.	05/00
-016	Revised Figure 2 to include the Extended Family and Extended Model when CPUID is executed with EAX=1. Added section 6 which describes the Brand String. Added section 10 Alternate Method of Detecting Features and sample code . Added the Pentium 4 processor signature to Table 4. Added new feature flags (SSE2, SS and TM) to Table 5. Added new cache descriptors to . Removed Pentium Pro cache descriptor example.	11/00
-017	Modified Figure 2 to include additional features reported by the Pentium 4 processors. Modified to include additional Cache and TLB descriptors defined by the Intel® NetBurst™ microarchitecture. Added Section 10 and program Example 5 which describes how to detect if a processor supports the DAZ feature. Added Section 11 and program Example 6 which describes a method of calculating the actual operating frequency of the processor.	02/01
-018	Changed the second 66h cache descriptor in Table 7 to 68h. Added the 83h cache descriptor to Table 7. Added the Pentium III processor, model B, processor signature and the Intel Xeon processor, processor signature to Table 4. Modified Table 4 to include the extended family and extended model fields. Modified Table 1 to include the information returned by the extended CPUID functions.	06/01

Revision	Description	Date
-019	<p>Changed to use registered trademark for Intel® Celeron® throughout entire document.</p> <p>Modified Table 5-1 to include new Brand ID values supported by the Intel® processors with Intel NetBurst® microarchitecture.</p> <p>Added Hyper-Threading Technology Flag to and Logical Processor Count to .</p> <p>Modified cpuid3b.asm and cpuid3.c example code to check for and identify Intel® processors based on the updated Brand ID values contained in Table 5-1.</p>	01/02
-020	<p>Modified to include new Cache Descriptor values supported by the Intel processors with Intel NetBurst microarchitecture.</p> <p>Modified Table 5-1 to include new Brand ID values supported by the Intel processors with Intel NetBurst microarchitecture.</p> <p>Modified cpuid3b.asm and cpuid3.c example code to check for and identify Intel® processors based on the updated Brand ID values contained in Table 5-1.</p>	03/02
-021	<p>Modified Table 3-3 to include additional processors that return a processor signature with a value in the family code equal to 0Fh.</p> <p>Modified to include new Cache Descriptor values supported by various Intel processors.</p> <p>Modified Table 5-1 to include new Brand ID values supported by the Intel processors with Intel NetBurst microarchitecture.</p> <p>Modified cpuid3b.asm and cpuid3.c example code to check for and identify Intel processors based on the updated Brand ID values contained in Table 5-1.</p>	05/02
-022	<p>Modified with correct Cache Descriptor descriptions.</p> <p>Modified with new feature flags returned in EDX.</p> <p>Added Table 3-5. Feature Flag Values Reported in the ECX Register the feature flags returned in ECX.</p> <p>Modified Table 3-3, broke out the processors with family 'F' by model numbers.</p>	11/02
-023	<p>Modified Table 3-3, added the Intel® Pentium® M processor.</p> <p>Modified with new feature flags returned in EDX.</p> <p>Modified Table 3-5. Feature Flag Values Reported in the ECX Register the feature flags returned in ECX.</p> <p>Modified with correct Cache Descriptor descriptions.</p>	03/03
-024	<p>Corrected feature flag definitions in Table 3-5. Feature Flag Values Reported in the ECX Register for bits 7 and 8.</p>	11/03



Revision	Description	Date
-025	<p>Modified Table 1 to add Deterministic Cache Parameters function (CPUID executed with EAX=4), MONITOR/MWAIT function (CPUID instruction is executed with EAX=5), Extended L2 Cache Features function (CPUID executed with EAX=80000006), Extended Addresses Sizes function (CPUID is executed with EAX=80000008).</p> <p>Modified Table 1 and Table 5 to reinforce no PSN on Pentium® 4 family processors.</p> <p>Modified, added the Intel® Pentium® 4 processor and Intel® Celeron® processor on 90nm process.</p> <p>Modified Table 3-5. Feature Flag Values Reported in the ECX Register to add new feature flags returned in ECX.</p> <p>Modified to include new Cache Descriptor values supported by various Intel processors.</p> <p>Modified Table 5-1 to include new Brand ID values supported by the Intel processors with Intel NetBurst microarchitecture.</p> <p>Modified cpuid3b.asm and cpuid3.c example code to check for and identify Intel processors based on the updated Brand ID values contained in Table 5-1.</p> <p>Modified features.cpp, cpuid3.c, and cpuid3a.asm to check for and identify new feature flags based on the updated values in Table 3-5. Feature Flag Values Reported in the ECX Register .</p>	01/04
-026	<p>Corrected the name of the feature flag returned in EDX[31] (PBE) when the CPUID instruction is executed with EAX set to a 1.</p> <p>Modified to indicate CPUID function 80000001h now returns extended feature flags in the EAX register.</p> <p>Added the Intel® Pentium® M processor (family 6, model D) to Table 3-3.</p> <p>Added section 3.2.2 and .</p> <p>Modified Table 3-5. Feature Flag Values Reported in the ECX Register to add new feature flags returned in ECX.</p> <p>Modified Table 3-5. Feature Flag Values Reported in the ECX Register to include new Cache Descriptor values supported by various Intel processors.</p> <p>Modified Table 5-1 to include new Brand ID values supported by the Intel processors with P6 family microarchitecture.</p> <p>Modified cpuid3b.asm and cpuid3.c example code to check for and identify Intel processors based on the updated Brand ID values contained in Table 5-1.</p> <p>Modified features.cpp, cpuid3.c, and cpuid3a.asm to check for and identify new feature flags based on the updated values in Table 3-5. Feature Flag Values Reported in the ECX Register .</p>	05/04
-027	Corrected the register used for Extended Feature Flags in	07/04

Revision	Description	Date
-028	<p>Corrected bit field definitions in for CPUID functions 80000001h and 80000006h.</p> <p>Added processor names for family 'F', model '4' to Table 3-3.</p> <p>Updated Table 3-5. Feature Flag Values Reported in the ECX Register to include the feature flag definition (ECX[13]) for the CMPXCHG16B instruction.</p> <p>Updated to include extended feature flag definitions for (EDX[11]) SYSCALL / SYSRET and (EDX[20]) Execute Disable bit.</p> <p>Updated Example 1 to extract CPUID extended function information.</p> <p>Updated Example 2 and Example 3 to detect and display extended features identified by CPUID function 80000001h.</p>	02/05
-029	<p>Modified to include new Cache Descriptor values supported by various Intel processors.</p>	03/05
-030	<p>Corrected Table 3-15. Extended Feature Flag Values Reported in the ECX Register.</p> <p>Added CPUID function 6, Power management Feature to Table 3-1.</p> <p>Updated Table 3-5 to include the feature flag definition (EDX[30]) for IA64 capabilities.</p> <p>Updated Table 3-10 to include new Cache Descriptor values supported by Intel Pentium 4 processors.</p> <p>Modified cpuid3b.asm and cpuid3.c example code to check for IA64 capabilities, CMPXCHG16B, LAHF/SAHF instructions.</p>	01/06
-031	<p>Update Intel® EM64T portions with new naming convention for Intel® 64 Instruction Set Architecture.</p> <p>Added section Composing the Family, Model and Stepping (FMS) values</p> <p>Added section Extended CPUID Functions</p> <p>Updated Table 3-4 to include the Intel® Core™2 Duo processor family.</p> <p>Updated Table 3-6 to include the feature flag definitions for VMX, SSSE3 and DCA.</p> <p>Updated Table 3-10 to include new Cache Descriptor values supported by Intel Core 2 Duo processor.</p> <p>Update CPUFREQ.ASM with alternate method to determine frequency without using TSC.</p>	09/06

§

1 Introduction

As the Intel® Architecture evolves with the addition of new generations and models of processors (8086, 8088, Intel286, Intel386™, Intel486™, Pentium® processors, Pentium® OverDrive® processors, Pentium® processors with MMX™ technology, Pentium® OverDrive® processors with MMX™ technology, Pentium® Pro processors, Pentium® II processors, Pentium® II Xeon® processors, Pentium® II Overdrive® processors, Intel® Celeron® processors, Mobile Intel® Celeron® processors, Intel® Celeron® D processors, Intel® Celeron® M processors, Pentium® III processors, Mobile Intel® Pentium® III Processor - M, Pentium® III Xeon® processors, Pentium® 4 processors, Mobile Intel® Pentium® 4 processor – M, Intel® Pentium® M Processor, Pentium® D processor, Pentium® processor Extreme Edition, Intel® Core™ Solo processor, Intel® Core™ Duo processor, Intel® Core™2 Duo processor, Intel® Core™2 Extreme processor, Intel® Xeon® processors and Intel® Xeon® processor MP), it is essential that Intel provide an increasingly sophisticated means with which software can identify the features available on each processor. This identification mechanism has evolved in conjunction with the Intel Architecture as follows:

1. Originally, Intel published code sequences that could detect minor implementation or architectural differences to identify processor generations.
2. Later, with the advent of the Intel386 processor, Intel implemented processor signature identification that provided the processor family, model, and stepping numbers to software, but only upon reset.
3. As the Intel Architecture evolved, Intel extended the processor signature identification into the CPUID instruction. The CPUID instruction not only provides the processor signature, but also provides information about the features supported by and implemented on the Intel processor.

The evolution of processor identification was necessary because, as the Intel Architecture proliferates, the computing market must be able to tune processor functionality across processor generations and models that have differing sets of features. Anticipating that this trend will continue with future processor generations, the Intel Architecture implementation of the CPUID instruction is extensible.

This application note explains how to use the CPUID instruction in software applications, BIOS implementations, and various processor tools. By taking advantage of the CPUID instruction, software developers can create software applications and tools that can execute compatibly across the widest range of Intel processor generations and models, past, present, and future.

1.1 Update Support

You can obtain new Intel processor signature and feature bits information from the developer's manual, programmer's reference manual or appropriate documentation for a processor. In addition, you can receive updated versions of the programming examples included in this application note; contact your Intel representative for more information, or visit Intel's website at <http://developer.intel.com/>.

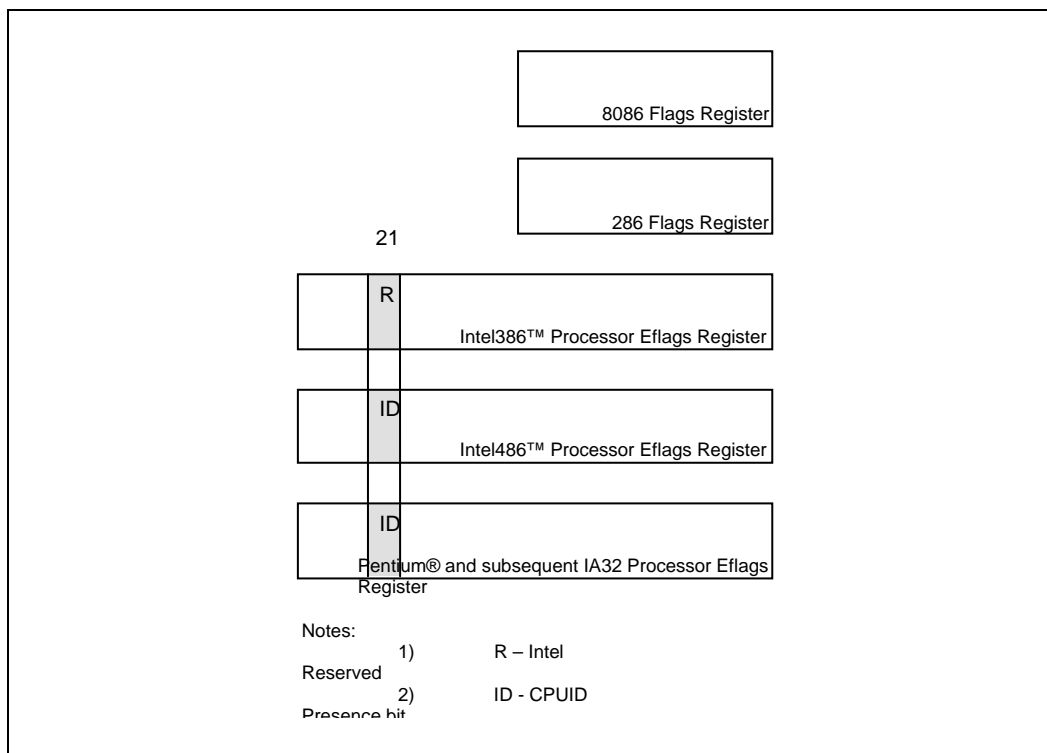
§



2 Detecting the CPUID Instruction

The Intel486 family and subsequent Intel processors provide a straightforward method for determining whether the processor's internal architecture is able to execute the CPUID instruction. This method uses the ID flag in bit 21 of the EFLAGS register. If software can change the value of this flag, the CPUID instruction is executable¹ (see Figure 2-1).

Figure 2-1. Flag Register Evolution



The POPF, POPFD, PUSHF, and PUSHFD instructions are used to access the Flags in Eflags register. The program examples at the end of this application note show how you use the PUSHFD instruction to read and the POPFD instruction to change the value of the ID flag.

§

¹Only in some Intel486™ and succeeding processors. Bit 21 in the Intel386™ processor's Eflag register cannot be changed by software, and the Intel386 processor cannot execute the CPUID instruction. Execution of CPUID on a processor that does not support this instruction will result in an invalid opcode exception.



3 Output of the CPUID Instruction

The CPUID instruction supports two sets of functions. The first set returns basic processor information. The second set returns extended processor information. Figure 3-1 summarizes the basic processor information output by the CPUID instruction. The output from the CPUID instruction is fully dependent upon the contents of the EAX register. This means, by placing different values in the EAX register and then executing CPUID, the CPUID instruction will perform a specific function dependent upon whatever value is resident in the EAX register. In order to determine the highest acceptable value for the EAX register input and CPUID functions that return the basic processor information, the program should set the EAX register parameter value to “0” and then execute the CPUID instruction as follows:

```
MOV  EAX, 00H
CPUID
```

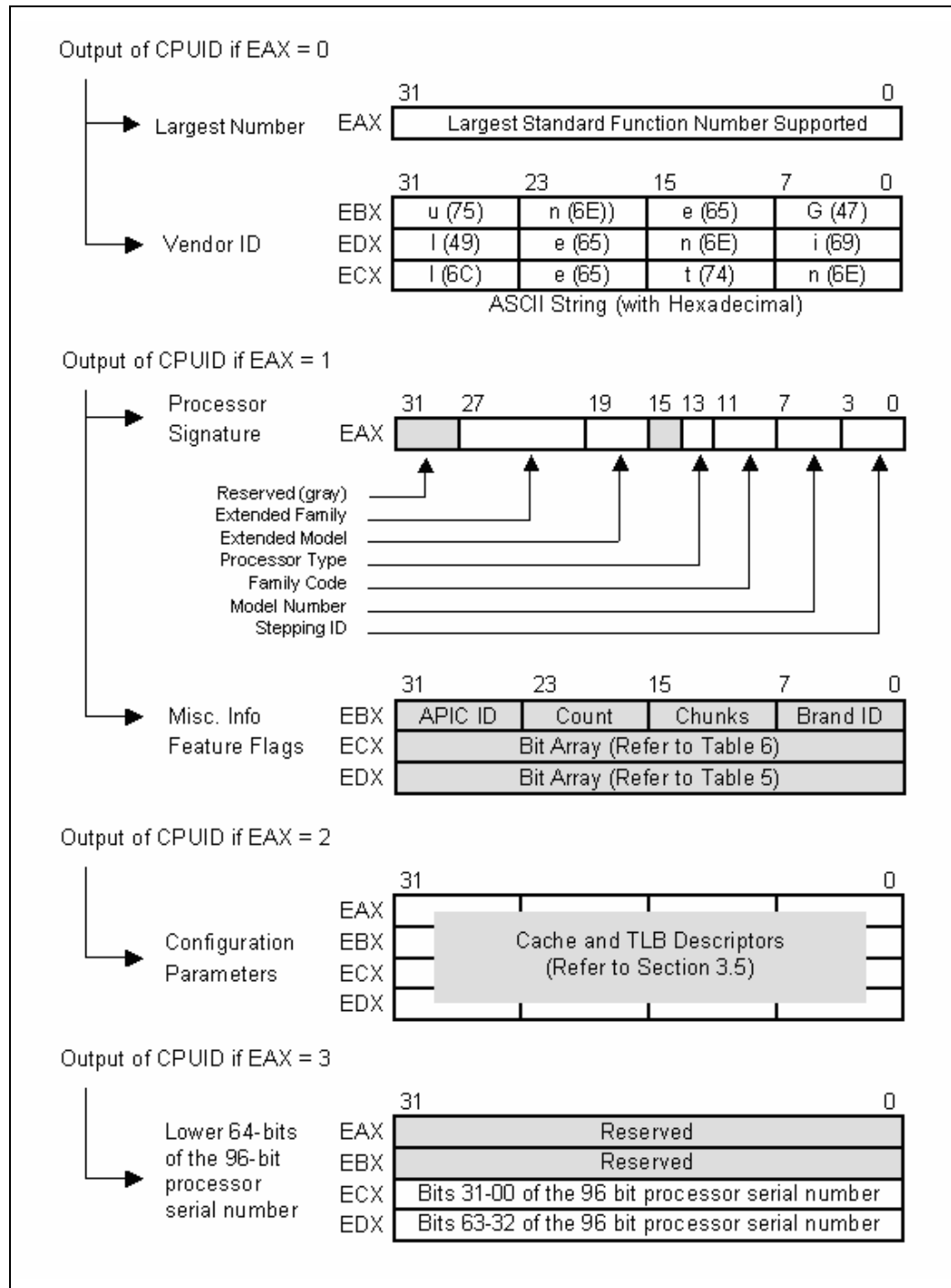
After the execution of the CPUID instruction, a return value will be present in the EAX register. Always use an EAX parameter value that is equal to or greater than zero and less than or equal to this highest EAX “returned” value.

In order to determine the highest acceptable value for the EAX register input and CPUID functions that return the extended processor information, the program should set the EAX register parameter value to “80000000h” and then execute the CPUID instruction as follows:

```
MOV  EAX, 80000000H
CPUID
```

After the execution of the CPUID instruction, a return value will be present in the EAX register. Always use an EAX parameter value that is equal to or greater than 80000000h and less than or equal to this highest EAX “returned” value. On current and future IA-32 processors, bit 31 in the EAX register will be clear when CPUID is executed with an input parameter greater than highest value for either set of functions, and when the extended functions are not supported. All other bit values returned by the processor in response to a CPUID instruction with EAX set to a value higher than appropriate for that processor are model specific and should not be relied upon.

Figure 3-1. CPUID Instruction Outputs



3.1 Standard CPUID Functions

3.1.1 Vendor-ID and Largest Standard Function (Function 0)

In addition to returning the largest standard function number in the EAX register, the Intel Vendor-ID string can be simultaneously verified as well. If the EAX register contains an input value of 0, the CPUID instruction also returns the vendor identification string in the EBX, EDX, and ECX registers (see Figure 3-1). These registers contain the ASCII string:

GenuineIntel

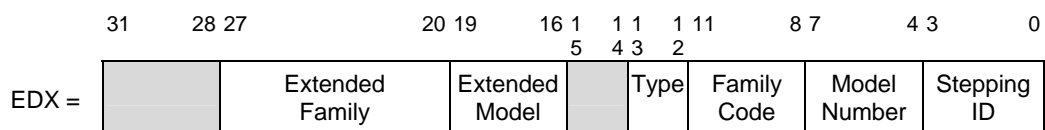
While any imitator of the Intel Architecture can provide the CPUID instruction, no imitator can legitimately claim that its part is a genuine Intel part. So, the presence of the “GenuineIntel” string is an assurance that the CPUID instruction and the processor signature are implemented as described in this document. If the “GenuineIntel” string is not returned after execution of the CPUID instruction, do not rely upon the information described in this document to interpret the information returned by the CPUID instruction.

3.1.2 Feature Information (Function 1)

3.1.2.1 Processor Signature

Beginning with the Intel486 processor family, the EDX register contains the processor identification signature after reset (see Figure 3-2). **The processor identification signature is a 32-bit value.** The processor signature is composed from eight different bit fields. The fields in gray represent reserved bits, and should be masked out when utilizing the processor signature. The remaining six fields form the processor identification signature.

Figure 3-2. EDX Register after RESET



Processors that implement the CPUID instruction also return the 32-bit processor identification signature after reset; however, the CPUID instruction gives you the flexibility of checking the processor signature at any time. Figure 3-2 shows the format of the 32-bit processor signature for the Intel486, and subsequent Intel processors. Note that the EDX processor signature value after reset is equivalent to the processor signature output value in the EAX register in Figure 3-1. Table 3-3 shows the values returned in the EAX register currently defined for these processors.

The extended family, bit positions 20 through 27 are used in conjunction with the family code, specified in bit positions 8 through 11, to indicate whether the processor belongs to the Intel386, Intel486, Pentium, Pentium Pro or Pentium 4 family of processors. P6 family processors include all processors based on the Pentium Pro processor architecture and have an extended family equal to 00h and a family code equal to 6h. Pentium 4 family processors include all processors based on



the Intel NetBurst[®] microarchitecture and have an extended family equal to 00h and a family code equal to 0Fh.

The extended model, bit positions 16 through 19 in conjunction with the model number, specified in bits 4 through 7, are used to identify the model of the processor within the processor's family. The stepping ID in bits 0 through 3 indicates the revision number of that model.

The processor type, specified in bit positions 12 and 13 of Table 3-1 indicates whether the processor is an original OEM processor, an OverDrive processor, or a dual processor (capable of being used in a dual processor system). Table 3-1 shows the processor type values returned in bits 12 and 13 of the EAX register.

Table 3-1. Processor Type (Bit Positions 13 and 12)

Value	Description
00	Original OEM processor
01	OverDrive [®] processor
10	Dual processor
11	Intel reserved (Do Not Use)

The Pentium II processor, model 5, the Pentium II Xeon processor, model 5, and the Celeron processor, model 5 share the same extended family, family code, extended model and model number. To differentiate between the processors, software should check the cache descriptor values through executing CPUID instruction with EAX = 2. If no L2 cache is returned, the processor is identified as an Intel[®] Celeron[®] processor, model 5. If 1 MB or 2 MB L2 cache size is reported, the processor is the Pentium II Xeon processor otherwise it is a Pentium II processor, model 5 or a Pentium II Xeon processor with 512 KB L2 cache.

The Pentium III processor, model 7, and the Pentium III Xeon processor, model 7, share the same extended family, family code, extended model and model number. To differentiate between the processors, software should check the cache descriptor values through executing CPUID instruction with EAX = 2. If 1 M or 2 M L2 cache size is reported, the processor is the Pentium III Xeon processor otherwise it is a Pentium III processor or a Pentium III Xeon processor with 512 KB L2 cache.

The processor brand for the Pentium III processor, model 8, the Pentium III Xeon processor, model 8, and the Celeron processor, model 8, can be determined by using the Brand ID values returned by the CPUID instruction when executed with EAX equal to 1. Table 5-1 shows the processor brands defined by the Brand ID.

Older versions of Intel486 SX, Intel486 DX and IntelDX2™ processors do not support the CPUID instruction², so they can only return the processor signature at reset. Refer to Table 3-3 to determine which processors support the CPUID instruction.

Figure 3-3 shows the format of the processor signature for Intel386 processors, which are different from other processors. Table 3-2 shows the values currently defined for these Intel386 processors.

Figure 3-3. Processor Signature Format on Intel386™ Processors

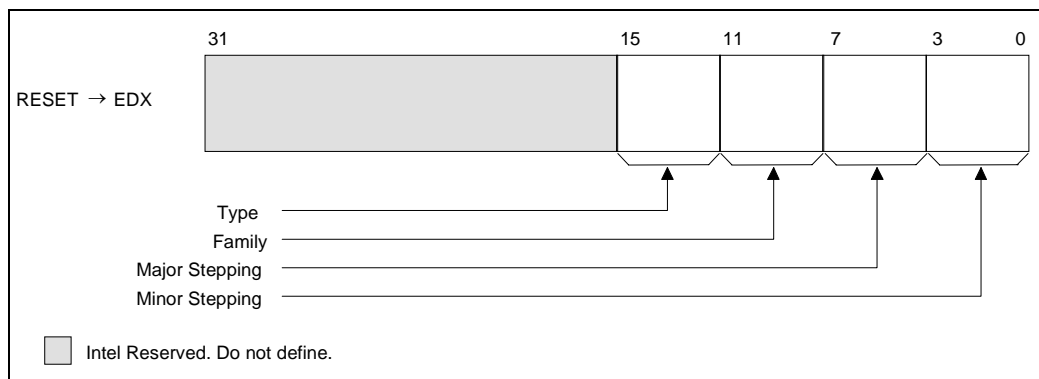


Table 3-2. Intel386™ Processor Signatures

Type	Family	Major Stepping	Minor Stepping	Description
0000	0011	0000	xxxx	Intel386™ DX processor
0010	0011	0000	xxxx	Intel386 SX processor
0010	0011	0000	xxxx	Intel386 CX processor
0010	0011	0000	xxxx	Intel386 EX processor
0100	0011	0000 and 0001	xxxx	Intel386 SL processor
0000	0011	0100	xxxx	RapidCAD* coprocessor

²All Intel486 SL-enhanced and Write-Back enhanced processors are capable of executing the CPUID instruction. See Table 3-3.

Table 3-3. Intel486™ and Subsequent Processor Signatures

Extended Family	Extended Model	Type	Family Code	Model Number	Stepping ID	Description
00000000	0000	00	0100	000x	xxxx (1)	Intel486™ DX processors
00000000	0000	00	0100	0010	xxxx (1)	Intel486 SX processors
00000000	0000	00	0100	0011	xxxx (1)	Intel487™ processors
00000000	0000	00	0100	0011	xxxx (1)	IntelDX2™ processors
00000000	0000	00	0100	0011	xxxx (1)	IntelDX2 OverDrive® processors
00000000	0000	00	0100	0100	xxxx (3)	Intel486 SL processor
00000000	0000	00	0100	0101	xxxx (1)	IntelSX2™ processors
00000000	0000	00	0100	0111	xxxx (3)	Write-Back Enhanced IntelDX2 processors
00000000	0000	00	0100	1000	xxxx (3)	IntelDX4™ processors
00000000	0000	0x	0100	1000	xxxx (3)	IntelDX4 OverDrive processors
00000000	0000	00	0101	0001	xxxx (2)	Pentium® processors (60, 66)
00000000	0000	00	0101	0010	xxxx (2)	Pentium processors (75, 90, 100, 120, 133, 150, 166, 200)
00000000	0000	01 (4)	0101	0001	xxxx (2)	Pentium OverDrive processor for Pentium processor (60, 66)
00000000	0000	01 (4)	0101	0010	xxxx (2)	Pentium OverDrive processor for Pentium processor (75, 90, 100, 120, 133)
00000000	0000	01	0101	0011	xxxx (2)	Pentium OverDrive processors for Intel486 processor-based systems
00000000	0000	00	0101	0100	xxxx (2)	Pentium processor with MMX™ technology (166, 200)
00000000	0000	01	0101	0100	xxxx (2)	Pentium OverDrive processor with MMX™ technology for Pentium processor (75, 90, 100, 120, 133)
00000000	0000	00	0110	0001	xxxx (2)	Pentium Pro processor
00000000	0000	00	0110	0011	xxxx (2)	Pentium II processor, model 3
00000000	0000	00	0110	0101(5)	xxxx (2)	Pentium II processor, model 5, Pentium II Xeon processor, model 5, and Intel® Celeron® processor, model 5
00000000	0000	00	0110	0110	xxxx (2)	Celeron processor, model 6
00000000	0000	00	0110	0111(6)	xxxx (2)	Pentium III processor, model 7, and Pentium III Xeon processor, model 7
00000000	0000	00	0110	1000(7)	xxxx (2)	Pentium III processor, model 8, Pentium III Xeon processor, model 8, and Celeron processor, model 8
00000000	0000	00	0110	1001	xxxx (2)	Intel Pentium M processor, Intel Celeron M processor model 9.
00000000	0000	00	0110	1010	xxxx (2)	Pentium III Xeon processor, model A



Extended Family	Extended Model	Type	Family Code	Model Number	Stepping ID	Description
00000000	0000	00	0110	1011	xxxx (2)	Pentium III processor, model B
00000000	0000	00	0110	1101	xxxx (2)	Intel Pentium M processor, Intel Celeron M processor, model D. All processors are manufactured using the 90 nm process.
00000000	0000	00	0110	1110	xxxx (2)	Intel Core™ Duo processor, Intel Core™ Solo processor, model E. All processors are manufactured using the 65 nm process.
00000000	0000	00	0110	1111	xxxx (2)	Intel Core™2 Duo processor, model F. All processors are manufactured using the 65 nm process.
00000000	0000	01	0110	0011	xxxx (2)	Intel Pentium II OverDrive processor
00000000	0000	00	1111	0000	xxxx (2)	Pentium 4 processor, Intel Xeon processor. All processors are model 0 and manufactured using the 0.18 micron process.
00000000	0000	00	1111	0001	xxxx (2)	Pentium 4 processor, Intel Xeon processor, Intel Xeon processor MP, and Intel Celeron processor. All processors are model 1 and manufactured using the 0.18 micron process.
00000000	0000	00	1111	0010	xxxx (2)	Pentium 4 processor, Mobile Intel Pentium 4 processor – M, Intel Xeon processor, Intel Xeon processor MP, Intel Celeron processor, and Mobile Intel Celeron processor. All processors are model 2 and manufactured using the 0.13 micron process.
00000000	0000	00	1111	0011	xxxx (2)	Pentium 4 processor, Intel Xeon processor, Intel Celeron D processor. All processors are model 3 and manufactured using the 90 nm process.

Extended Family	Extended Model	Type	Family Code	Model Number	Stepping ID	Description
00000000	0000	00	1111	0100	xxxx ⁽²⁾	Pentium 4 processor, Pentium 4 processor Extreme Edition, Pentium D processor, Intel Xeon processor, Intel Xeon processor MP, Intel Celeron D processor. All processors are model 4 and manufactured using the 90 nm process.
00000000	0000	00	1111	0110	xxxx ⁽²⁾	Pentium 4 processor, Pentium D processor, Pentium processor Extreme Edition, Intel Xeon processor, Intel Xeon processor MP, Intel Celeron D processor. All processors are model 6 and manufactured using the 65 nm process.

NOTES:

1. This processor does not implement the CPUID instruction.
2. Refer to the Intel486™ documentation, the Pentium® Processor Specification Update (Document Number 242480), the Pentium® Pro Processor Specification Update (Document Number 242689), the Pentium® II Processor Specification Update (Document Number 243337), the Pentium® II Xeon Processor Specification Update (Document Number 243776), the Intel® Celeron® Processor Specification Update (Document Number 243748), the Pentium® III Processor Specification Update (Document Number 244453), the Pentium® III Xeon Processor Specification Update (Document Number 244460), the Pentium® 4 Processor Specification Update (Document Number 249199), the Intel® Xeon® Processor Specification Update (Document Number 249678) or the Intel® Xeon® Processor MP Specification Update (Document Number 290741) for the latest list of stepping numbers.
3. Stepping 3 implements the CPUID instruction.
4. The definition of the type field for the OverDrive processor is 01h. An erratum on the Pentium OverDrive processor will always return 00h as the type.
5. To differentiate between the Pentium II processor, model 5, Pentium II Xeon processor and the Celeron processor, model 5, software should check the cache descriptor values through executing CPUID instruction with EAX = 2. If no L2 cache is returned, the processor is identified as a Celeron processor, model 5. If 1 M or 2 M L2 cache size is reported, the processor is the Pentium II Xeon processor otherwise it is a Pentium II processor, model 5 or a Pentium II Xeon processor with 512-KB L2 cache size.
6. To differentiate between the Pentium III processor, model 7 and the Pentium III Xeon processor, model 7, software should check the cache descriptor values through executing CPUID instruction with EAX = 2. If 1M or 2M L2 cache size is reported, the processor is the Pentium III Xeon processor otherwise it is a Pentium III processor or a Pentium III Xeon processor with 512-KB L2 cache size.
7. To differentiate between the Pentium III processor, model 8 and the Pentium III Xeon processor, model 8, software should check the Brand ID values through executing CPUID instruction with EAX = 1.
8. To differentiate between the processors with the same processor Vendor ID, software should execute the Brand String functions and parse the Brand String.

3.1.2.2 Composing the Family, Model and Stepping (FMS) values

The processor family is an 8-bit value obtained by adding the *Extended Family* field of the processor signature returned by CPUID function 1 with the *Family* field.

Equation 1. Calculated Family Value

$$F = \text{Extended Family} + \text{Family}$$

$$F = \text{CPUID}(1).EAX[27:20] + \text{CPUID}(1).EAX[11:8]$$

The processor model is an 8-bit value obtained by shifting left 4 the *Extended Model* field of the processor signature returned by CPUID function 1 then adding the *Model* field.

Equation 2. Calculated Model Value

$$M = (\text{Extended Model} \ll 4) + \text{Model}$$

$$M = (\text{CPUID}(1) . \text{EAX}[19:16] \ll 4) + \text{CPUID}(1) . \text{EAX}[7:4]$$

The processor stepping is a 4-bit value obtained by copying the *Stepping* field of the processor signature returned by CPUID function 1.

Equation 3. Calculated Stepping Value

$$S = \text{Stepping}$$

$$S = \text{CPUID}(1) . \text{EAX}[3:0]$$

Recommendations for Testing Compliance

New and existing software should be inspected to ensure code always uses (1) the full 32-bit value when comparing processor signatures, (2) the full 8-bit value when comparing processor families, the full 8-bit value when comparing processor models, and (3) the 4-bit value when comparing processor steppings.

3.1.2.3 Feature Flags

When the EAX register contains a value of 1, the CPUID instruction (in addition to loading the processor signature in the EAX register) loads the EDX and ECX register with the feature flags. The feature flags (when a Flag = 1) indicate what features the processor supports. Table 3-4 and Table 3-5 list the currently defined feature flag values.

For future processors, refer to the programmer’s reference manual, user’s manual, or the appropriate documentation for the latest feature flag values.

Use the feature flags in your applications to determine which processor features are supported. By using the CPUID feature flags to determine processor features, your software can detect and avoid incompatibilities introduced by the addition or removal of processor features.

Table 3-4. Feature Flag Values Reported in the EDX Register

Bit	Name	Description when Flag = 1	Comments
0	FPU	Floating-point unit on-Chip	The processor contains an FPU that supports the Intel387 floating-point instruction set.
1	VME	Virtual Mode Extension	The processor supports extensions to virtual-8086 mode.
2	DE	Debugging Extension	The processor supports I/O breakpoints, including the CR4.DE bit for enabling debug extensions and optional trapping of access to the DR4 and DR5 registers.
3	PSE	Page Size Extension	The processor supports 4-Mbyte pages.

Bit	Name	Description when Flag = 1	Comments
4	TSC	Time-Stamp Counter	The RDTSC instruction is supported including the CR4.TSD bit for access/privilege control.
5	MSR	Model Specific Registers	Model Specific Registers are implemented with the RDMSR, WRMSR instructions
6	PAE	Physical Address Extension	Physical addresses greater than 32 bits are supported.
7	MCE	Machine Check Exception	Machine Check Exception, Exception 18, and the CR4.MCE enable bit are supported
8	CX8	CMPXCHG8 Instruction Supported	The compare and exchange 8 bytes instruction is supported.
9	APIC	On-chip APIC Hardware Supported	The processor contains a software-accessible Local APIC.
10		Reserved	Do not count on their value.
11	SEP	Fast System Call	Indicates whether the processor supports the Fast System Call instructions, SYSENTER and SYSEXIT. NOTE: Refer to Section 0 for further information regarding SYSENTER/ SYSEXIT feature and SEP feature bit.
12	MTRR	Memory Type Range Registers	The Processor supports the Memory Type Range Registers specifically the MTRR_CAP register.
13	PGE	Page Global Enable	The global bit in the page directory entries (PDEs) and page table entries (PTEs) is supported, indicating TLB entries that are common to different processes and need not be flushed. The CR4.PGE bit controls this feature.
14	MCA	Machine Check Architecture	The Machine Check Architecture is supported, specifically the MCG_CAP register.
15	CMOV	Conditional Move Instruction Supported	The processor supports CMOVcc, and if the FPU feature flag (bit 0) is also set, supports the FCMOVCC and FCOMI instructions.
16	PAT	Page Attribute Table	Indicates whether the processor supports the Page Attribute Table. This feature augments the Memory Type Range Registers (MTRRs), allowing an operating system to specify attributes of memory on 4K granularity through a linear address.
17	PSE-36	36-bit Page Size Extension	Indicates whether the processor supports 4-Mbyte pages that are capable of addressing physical memory beyond 4GB. This feature indicates that the upper four bits of the physical address of the 4-Mbyte page is encoded by bits 13-16 of the page directory entry.



Bit	Name	Description when Flag = 1	Comments
18	PSN	Processor serial number is present and enabled	The processor supports the 96-bit processor serial number feature, and the feature is enabled. Note: The Pentium 4 family of processors do not support this feature.
19	CLFSH	CLFLUSH Instruction supported	Indicates that the processor supports the CLFLUSH instruction.
20		Reserved	Do not count on their value.
21	DS	Debug Store	Indicates that the processor has the ability to write a history of the branch to and from addresses into a memory buffer.
22	ACPI	Thermal Monitor and Software Controlled Clock Facilities supported	The processor implements internal MSR's that allow processor temperature to be monitored and processor performance to be modulated in predefined duty cycles under software control.
23	MMX	Intel Architecture MMX technology supported	The processor supports the MMX technology instruction set extensions to Intel Architecture.
24	FXSR	Fast floating point save and restore	Indicates whether the processor supports the FXSAVE and FXRSTOR instructions for fast save and restore of the floating point context. Presence of this bit also indicates that CR4.OSFXSR is available for an operating system to indicate that it uses the fast save/restore instructions.
25	SSE	Streaming SIMD Extensions supported	The processor supports the Streaming SIMD Extensions to the Intel Architecture.
26	SSE2	Streaming SIMD Extensions 2	Indicates the processor supports the Streaming SIMD Extensions – 2 Instructions.
27	SS	Self-Snoop	The processor supports the management of conflicting memory types by performing a snoop of its own cache structure for transactions issued to the bus.

Bit	Name	Description when Flag = 1	Comments
28	HTT	Multi-Threading	<p>The physical processor package is capable of supporting more than one logical processor.</p> <p>This field does not indicate that Hyper-Threading Technology or Core Multi-Processing (CMP) has been enabled for this specific processor. To determine if Hyper-Threading Technology or CMP is supported, compare value returned in EBX[23:16] after executing CPUID with EAX=1. If the resulting value is > 1, then the processor supports Multi-Threading.</p> <pre>IF (CPUID(1).EBX[23:16] > 1) { Multi-Threading = TRUE } ELSE { Multi-Threading = FALSE }</pre>
29	TM	Thermal Monitor supported	The processor implements the Thermal Monitor automatic thermal control circuit (TCC).
30	IA64	IA64 Capabilities	The processor is a member of the Intel® Itanium® processor family and currently operating in IA32 emulation mode.
31	PBE	Pending Break Enable	The processor supports the use of the FERR#/PBE# pin when the processor is in the stop-clock state (STPCLK# is asserted) to signal the processor that an interrupt is pending and that the processor should return to normal operation to handle the interrupt. Bit 10 (PBE enable) in the IA32_MISC_ENABLE MSR enables this capability.

Table 3-5. Feature Flag Values Reported in the ECX Register

Bit	Name	Description when Flag = 1	Comments
0	SSE3	Streaming SIMD Extensions 3	The processor supports the Streaming SIMD Extensions 3 instructions.
2:1		Reserved	Do not count on their value.
3	MONITOR	MONITOR/MWAIT	The processor supports the MONITOR and MWAIT instructions.
4	DS-CPL	CPL Qualified Debug Store	The processor supports the extensions to the Debug Store feature to allow for branch message storage qualified by CPL.
5	VMX	Virtual Machine Extensions	The processor supports Intel® Virtualization Technology
6		Reserved	Do not count on their value.
7	EST	Enhanced Intel SpeedStep® Technology	The processor implements the second-generation Intel SpeedStep Technology feature.

Bit	Name	Description when Flag = 1	Comments
8	TM2	Thermal Monitor 2	The processor implements the Thermal Monitor 2 thermal control circuit (TCC).
9	SSSE3	Supplemental Streaming SIMD Extensions 3	The processor supports the Supplemental Streaming SIMD Extensions 3 instructions.
10	CID	Context ID	The L1 data cache mode can be set to either adaptive mode or shared mode by the BIOS.
12:11		Reserved	Do not count on their value.
13	CX16	CMPXCHG16B	This processor supports the CMPXCHG16B instruction.
14	xTPR	Send Task Priority Messages	The processor supports the ability to disable sending Task Priority messages. When this feature flag is set, Task Priority messages may be disabled. Bit 23 (Echo TPR disable) in the IA32_MISC_ENABLE MSR controls the sending of Task Priority messages.
17:15		Reserved	
18	DCA	Direct Cache Access	The processor supports the ability to prefetch data from a memory mapped device.
31:19		Reserved	Do not count on their value.

3.1.2.4 SYSENTER/SYSEXIT – SEP Features Bit

The SYSENTER Present (SEP) Feature bit (return in EDX bit 11 after executing of CPUID function 1) indicates the presence of this facility. An operating system that detects the presence of the SEP Feature bit must also qualify the processor family and model to ensure that the SYSENTER/SYSEXIT instructions are actually present:

```
IF (CPUID SEP Feature bit is set, i.e. CPUID (1).EDX[11] == 1)
{
    IF ((Processor Signature & 0xFFFF3FFF) < 0x00000633)
        Fast System Call is NOT supported
    ELSE
        Fast System Call is supported
}
```

The Pentium Pro processor (Model = 1) returns a set SEP CPUID feature bit, but should not be used by software.

3.1.3 Cache Descriptors (Function 2)

When the EAX register contains a value of 2, the CPUID instruction loads the EAX, EBX, ECX and EDX registers with descriptors that indicate the processors cache and TLB characteristics. The lower 8 bits of the EAX register (AL) contain a value that identifies the number of times the CPUID has to be executed to obtain a complete image of the processor’s caching systems. For example, the Pentium 4 processor returns a value of 1 in the lower 8 bits of the EAX register to

indicate that the CPUID instruction need only be executed once (with EAX = 2) to obtain a complete image of the processor configuration.

The remainder of the EAX register, the EBX, ECX and EDX registers contain the cache and TLB descriptors. Table 3-6 shows that when bit 31 in a given register is zero, that register contains valid 8-bit descriptors. To decode descriptors, move sequentially from the most significant byte of the register down through the least significant byte of the register. Assuming bit 31 is 0, then that register contains valid cache or TLB descriptors in bits 24 through 31, bits 16 through 23, bits 8 through 15 and bits 0 through 7. Software must compare the value contained in each of the descriptor bit fields with the values found in Table 3-7 to determine the cache and TLB features of a processor

Table 3-7 lists the current cache and TLB descriptor values and their respective characteristics. This list will be extended in the future as necessary. Between models and steppings of processors the cache and TLB information may change bit field locations, therefore it is important that software not assume fixed locations when parsing the cache and TLB descriptors.

Table 3-6. Descriptor Formats

Register bit 31	Descriptor Type	Description
1	Reserved	Reserved for future use.
0	8-bit descriptors	Descriptors point to a parameter table to identify cache characteristics. The descriptor is null if it has a 0 value.

Table 3-7. Descriptor Decode Values

Value	Cache or TLB Description
00h	Null
01h	Instruction TLB: 4 KB Pages, 4-way set associative, 32 entries
02h	Instruction TLB: 4 MB Pages, fully associative, 2 entries
03h	Data TLB: 4 KB Pages, 4-way set associative, 64 entries
04h	Data TLB: 4 MB Pages, 4-way set associative, 8 entries
05h	Data TLB: 4 MB Pages, 4-way set associative, 32 entries
06h	1 st -level instruction cache: 8 KB, 4-way set associative, 32-byte line size
08h	1 st -level instruction cache: 16 KB, 4-way set associative, 32-byte line size
0Ah	1 st -level data cache: 8 KB, 2-way set associative, 32-byte line size
0Ch	1 st -level data cache: 16 KB, 4-way set associative, 32-byte line size
22h	3 rd -level cache: 512 KB, 4-way set associative, sectored cache, 64-byte line size
23h	3 rd -level cache: 1 MB, 8-way set associative, sectored cache, 64-byte line size
25h	3 rd -level cache: 2 MB, 8-way set associative, sectored cache, 64-byte line size
29h	3 rd -level cache: 4 MB, 8-way set associative, sectored cache, 64-byte line size
2Ch	1 st -level data cache: 32 KB, 8-way set associative, 64-byte line size
30h	1 st -level instruction cache: 32 KB, 8-way set associative, 64-byte line size

Value	Cache or TLB Description
39h	2 nd -level cache: 128 KB, 4-way set associative, sectored cache, 64-byte line size
3Ah	2 nd -level cache: 192 KB, 6-way set associative, sectored cache, 64-byte line size
3Bh	2 nd -level cache: 128 KB, 2-way set associative, sectored cache, 64-byte line size
3Ch	2 nd -level cache: 256 KB, 4-way set associative, sectored cache, 64-byte line size
3Dh	2 nd -level cache: 384 KB, 6-way set associative, sectored cache, 64-byte line size
3Eh	2 nd -level cache: 512 KB, 4-way set associative, sectored cache, 64-byte line size
40h	No 2 nd -level cache or, if processor contains a valid 2 nd -level cache, no 3 rd -level cache
41h	2 nd -level cache: 128 KB, 4-way set associative, 32-byte line size
42h	2 nd -level cache: 256 KB, 4-way set associative, 32-byte line size
43h	2 nd -level cache: 512 KB, 4-way set associative, 32-byte line size
44h	2 nd -level cache: 1 MB, 4-way set associative, 32-byte line size
45h	2 nd -level cache: 2 MB, 4-way set associative, 32-byte line size
46h	3 rd -level cache: 4 MB, 4-way set associative, 64-byte line size
47h	3 rd -level cache: 8 MB, 8-way set associative, 64-byte line size
49h	3 rd -level cache: 4 MB, 16-way set associative, 64-byte line size (Intel Xeon processor MP, Family F, Model 6) 2 nd -level cache: 4 MB, 16-way set associative, 64-byte line size
4Ah	3 rd -level cache: 6 MB, 12-way set associative, 64-byte line size
4Bh	3 rd -level cache: 8 MB, 16-way set associative, 64-byte line size
4Ch	3 rd -level cache: 12 MB, 12-way set associative, 64-byte line size
4Dh	3 rd -level cache: 16 MB, 16-way set associative, 64-byte line size
50h	Instruction TLB: 4 KB, 2 MB or 4 MB pages, fully associative, 64 entries
51h	Instruction TLB: 4 KB, 2 MB or 4 MB pages, fully associative, 128 entries
52h	Instruction TLB: 4 KB, 2 MB or 4 MB pages, fully associative, 256 entries
56h	L0 Data TLB: 4 MB pages, 4-way set associative, 16 entries
57h	L0 Data TLB: 4 MB pages, 4-way set associative, 16 entries
5Bh	Data TLB: 4 KB or 4 MB pages, fully associative, 64 entries
5Ch	Data TLB: 4 KB or 4 MB pages, fully associative, 128 entries
5Dh	Data TLB: 4 KB or 4 MB pages, fully associative, 256 entries
60h	1 st -level data cache: 16 KB, 8-way set associative, sectored cache, 64-byte line size
66h	1 st -level data cache: 8 KB, 4-way set associative, sectored cache, 64-byte line size
67h	1 st -level data cache: 16 KB, 4-way set associative, sectored cache, 64-byte line size
68h	1 st -level data cache: 32 KB, 4 way set associative, sectored cache, 64-byte line size
70h	Trace cache: 12 K-uops, 8-way set associative
71h	Trace cache: 16 K-uops, 8-way set associative

Value	Cache or TLB Description
72h	Trace cache: 32 K-uops, 8-way set associative
73h	Trace cache: 64 K-uops, 8-way set associative
78h	2 nd -level cache: 1 MB, 4-way set associative, 64-byte line size
79h	2 nd -level cache: 128 KB, 8-way set associative, sectored cache, 64-byte line size
7Ah	2 nd -level cache: 256 KB, 8-way set associative, sectored cache, 64-byte line size
7Bh	2 nd -level cache: 512 KB, 8-way set associative, sectored cache, 64-byte line size
7Ch	2 nd -level cache: 1 MB, 8-way set associative, sectored cache, 64-byte line size
7Dh	2 nd -level cache: 2 MB, 8-way set associative, 64-byte line size
7Fh	2 nd -level cache: 512 KB, 2-way set associative, 64-byte line size
82h	2 nd -level cache: 256 KB, 8-way set associative, 32-byte line size
83h	2 nd -level cache: 512 KB, 8-way set associative, 32-byte line size
84h	2 nd -level cache: 1 MB, 8-way set associative, 32-byte line size
85h	2 nd -level cache: 2 MB, 8-way set associative, 32-byte line size
86h	2 nd -level cache: 512 KB, 4-way set associative, 64-byte line size
87h	2 nd -level cache: 1 MB, 8-way set associative, 64-byte line size
B0h	Instruction TLB: 4 KB Pages, 4-way set associative, 128 entries
B1h	Instruction TLB: 4 MB Pages, 4-way set associative, 4 entries Instruction TLB: 2 MB Pages, 4-way set associative, 8 entries
B3h	Data TLB: 4 KB Pages, 4-way set associative, 128 entries
B4h	Data TLB: 4 KB Pages, 4-way set associative, 256 entries
F0h	64-byte Prefetching
F1h	128-byte Prefetching

3.1.3.1 Pentium® 4 Processor, Model 0 Output Example

The Pentium 4 processor, model 0 returns the values shown in Table 3-8. Since the value of AL=1, it is valid to interpret the remainder of the registers. Table 3-8 also shows the MSB (bit 31) of all the registers are 0 which indicates that each register contains valid 8-bit descriptor. The register values in Table 3-8 show that this Pentium 4 processor has the following cache and TLB characteristics:

- (66h) A 1st-level data cache that is 8 KB, 4-way set associative, dual-sectored line, with 64-byte sector size.
- (5Bh) A data TLB that maps 4 KB or 4 MB pages, is fully associative, and has 64 entries.
- (50h) An instruction TLB that maps 4 KB, 2 MB or 4 MB pages, is fully associative, and has 64 entries.
- (7Ah) A 2nd-level cache that is 256 KB, 8-way set associative, dual-sectored line, with 64-byte sector size.
- (70h) A trace cache that can store up to 12K-uops, and is 8-way set associative.
- (40h) No 3rd-level cache

**Table 3-8. Pentium® 4 Processor, Model 0 with 256 KB L2 Cache CPUID (EAX=2)
Example Return Values**

	31	23	15	7	0
EAX	66h	5Bh	50h	01h	
EBX	00h	00h	00h	00h	
ECX	00h	00h	00h	00h	
EDX	00h	7Ah	70h	40h	

3.1.4 Processor Serial Number (Function 3)

Processor serial number (PSN) is available in Pentium III processor only. The value in this register is reserved in the Pentium 4 processor or later. On all models, use the PSN flag (returned using CPUID) to check for PSN support before accessing the feature. Refer to Section 4 for more details.

3.1.5 Deterministic Cache Parameters (Function 4)

When EAX is initialized to a value of 4, the CPUID instruction returns deterministic cache information in the EAX, EBX, ECX and EDX registers. This function requires ECX be initialized with an index which indicates which cache to return information about. The OS is expected to call this function (CPUID.4) with ECX = 0, 1, 2, until EAX[4:0] == 0, indicating no more caches. The order in which the caches are returned is not specified and may change at Intel's discretion.

Note: The BIOS will use this function to determine the number of cores implemented in a specific physical processor package. To do this the BIOS must initially set the EAX register to 4 and the ECX register to 0 prior to executing the CPUID instruction. After executing the CPUID instruction, (EAX[31:26] + 1) contains the number of cores.

Table 3-9. Deterministic Cache Parameters

Register Bits	Description
EAX[31:26]	Number of processor cores on this die. Encoded with a "plus 1" encoding. Add one to the value in the register field to get the number.
EAX[25:14]	Total Number of threads sharing this cache. Encoded with a "plus 1" encoding. Add one to the value in the register field to get the number.
EAX[13:10]	Reserved.
EAX[09]	Fully Associative Cache
EAX[08]	Self Initializing cache level
EAX[07:05]	Cache Level (Starts at 1)

Register Bits	Description
EAX[4:0]	Cache Type 0 = Null, no more caches 1 = Data Cache 2 = Instruction Cache 3 = Unified Cache 4-31 = Reserved
EBX[31:22]	Ways of Associativity Encoded with a “plus 1” encoding. Add one to the value in the register field to get the number.
EBX[21:12]	Physical Line partitions Encoded with a “plus 1” encoding. Add one to the value in the register field to get the number.
EBX[11:0]	System Coherency Line Size
ECX[31:0]	Number of Sets Encoded with a “plus 1” encoding. Add one to the value in the register field to get the number.
EDX[31:10]	Reserved
EDX[9:0]	Prefetch stride (64B if this field is 0)

Equation 4. Calculating the Cache Size

This Cache Size in Bytes = (Ways + 1) * (Partitions + 1) * (Line_Size + 1) * (Sets + 1) = (EBX[31:22] + 1) * (EBX[21:12] + 1) * (EBX[11:0] + 1) * (ECX + 1)
--

3.1.5.1 Cache Sharing Among Cores and Threads

The multi-core and threads fields give information about cache sharing. By comparing the following three numbers:

4. Number of logical processors per physical processor package (CPUID.1.EBX[23:16])
5. Number of cores per physical package (CPUID.4.EAX[31:26] + 1)
6. Total number of threads serviced by this cache (CPUID.4.EAX[25:14] + 1)

Software can determine whether this cache is shared between cores, or specific to one core, or even specific to one thread or a subset of threads. This feature is very important with regard to logical processors since it is a means of differentiating a Hyper-Threading technology processor from a multi-core processor or a multi-core processor with Hyper-Threading Technology. Note that the sharing information was not available using the cache descriptors returned by CPUID function 2.

3.1.6 MONITOR / MWAIT Parameters (Function 5)

When EAX is initialized to a value of 5, the CPUID instruction returns MONITOR / MWAIT parameters in the EAX, EBX, ECX and EDX registers if the MONITOR and MWAIT instructions are supported by the processor.

Table 3-10. MONITOR / MWAIT Parameters

Register Bits	Description
EAX[31:16]	Reserved.
EAX[15:0]	Smallest monitor line size in bytes.
EBX[31:16]	Reserved.
EBX[15:0]	Largest monitor line size in bytes.
ECX[31:2]	Reserved.
ECX[1]	Support for treating interrupts as break-events for MWAIT.
ECX[0]	MONITOR / MWAIT Extensions supported
EDX[31:20]	Reserved
EDX[19:16]	Number of C4 sub-states supported using MONITOR / MWAIT ¹
EDX[15:12]	Number of C3 sub-states supported using MONITOR / MWAIT
EDX[11:8]	Number of C2 sub-states supported using MONITOR / MWAIT
EDX[7:4]	Number of C1 sub-states supported using MONITOR / MWAIT
EDX[3:0]	Number of C0 sub-states supported using MONITOR / MWAIT

3.1.7 Digital Thermal Sensor and Power Management Parameters (Function 6)

When EAX is initialized to a value of 6, the CPUID instruction returns Digital Thermal Sensor and Power Management parameters in the EAX, EBX, ECX and EDX registers.

Table 3-11. Digital Thermal Sensor and Power Management Parameters

Register Bits	Description
EAX[31:1]	Reserved.
EAX[0]	Digital Thermal Sensor Capability
EBX[31:4]	Reserved.
EBX[3:0]	Number of Interrupt Thresholds.
ECX[31:1]	Reserved.
ECX[0]	Hardware Coordination Feedback Capability (Presence of ACNT, MCNT MSRs)
EDX[31:0]	Reserved.

3.1.8 Reserved (Function 7)

3.1.9 Reserved (Function 8)

3.1.10 Direct Cache Access (DCA) Parameters (Function 9)

When EAX is initialized to a value of 9, the CPUID instruction returns DCA information in the EAX, EBX, ECX and EDX registers.

Table 3-12. DCA parameters

Register Bits	Description
EAX[31:0]	Value of PLATFORM_DCA_CAP MSR Bits [31:0] (Offset 1F8h)
EBX[31:0]	Reserved
ECX[31:0]	Reserved
EDX[31:0]	Reserved

3.2 Extended CPUID Functions

3.2.1 Largest Extended Function # (Function 8000000h)

When EAX is initialized to a value of 8000_0000h, the CPUID instruction returns the largest extended function number supported by the processor in register EAX.

Table 3-13. Largest Extended Function

	31	23	15	7	0
EAX[31:0]	Largest extended function number supported				
EBX[31:0]	Reserved				
EDX[31:0]	Reserved				
ECX[31:0]	Reserved				

3.2.2 Extended Feature Bits (Function 8000001h)

When the EAX register contains a value of 80000001h, the CPUID instruction loads the EDX register with the extended feature flags. The feature flags (when a Flag = 1) indicate what extended features the processor supports. 4 lists the currently defined extended feature flag values.

For future processors, refer to the programmer's reference manual, user's manual, or the appropriate documentation for the latest extended feature flag values.

Note: Use the extended feature flags in your applications to determine which processor features are supported. By using the CPUID feature flags to determine processor features, your software can detect and avoid incompatibilities introduced by the addition or removal of processor features.

Table 3-14. Extended Feature Flag Values Reported in the EDX Register

Bit	Name	Description when Flag = 1	Comments
10:0		Reserved	Do not count on their value.
11	SYSCALL	SYSCALL/SYSRET	The processor supports the SYSCALL and SYSRET instructions.
19:12		Reserved	Do not count on their value.
20	XD Bit	Execution Disable Bit	The processor supports the XD Bit when PAE mode paging is enabled.
28:21		Reserved	Do not count on their value.
29	Intel® 64	Intel® 64 Instruction Set Architecture	The processor supports 64-bit extensions to the IA-32 Architecture. For additional information refer to the “64-bit Extensions Technology Software Developers Guide” (document numbers 300834 and 300835) available at: http://developer.intel.com/technology/64bit_extensions/
31:30		Reserved	Do not count on their value.

Table 3-15. Extended Feature Flag Values Reported in the ECX Register

Bit	Name	Description when Flag = 1	Comments
0	LAHF	LAHF / SAHF	A value of 1 indicates the LAHF and SAHF instructions are available when the IA-32e mode is enabled and the processor is operating in the 64-bit sub-mode.
31:1		Reserved	Do not count on their value.

3.2.3 Processor Name / Brand String (Function 8000002h, 8000003h, 8000004h)

Functions 8000_0002h, 8000_0003h, and 8000_0004h each return up to 16 ASCII bytes of the processor name in the EAX, EBX, ECX, and EDX registers. The processor name is constructed by concatenating each 16-byte ASCII string returned by the three functions. The processor name is right justified with leading space characters. It is returned in little-endian format and NULL terminated. The processor name can be a maximum of 48 bytes including the NULL terminator character. In addition to the processor name, these functions return the maximum supported speed of the processor in ASCII.



3.2.3.1 Building the Processor Name

Software must reserve enough space in a byte array to concatenate the three 16 byte ASCII strings that comprise the processor name. Software must execute each function in sequence. After sequentially executing each CPUID Brand String function, Software must concatenate EAX, EBX, ECX, and EDX to create the resulting processor Brand String.

Example 1. Building the Processor Brand String

```

Processor_Name          db      48 dup(0)

    MOV     EAX, 80000000h
    CPUID
    CMP     EAX, 80000004h          ; Check if extended
                                   ; functions are
                                   ; supported
    JB     Not_Supported

    MOV     EAX, 80000002h
    MOV     DI, OFFSET Processor_Name
    CPUID                               ; Get the first 16
                                   ; bytes of the
                                   ; processor name

    CALL    Save_String
    MOV     EAX, 80000003h
    CPUID                               ; Get the second
                                   ; 16 bytes of the
                                   ; processor name

    CALL    Save_String
    MOV     EAX, 80000004h
    CPUID                               ; Get the last 16
                                   ; bytes of the
                                   ; processor name

    CALL    Save_String
Not_Supported:
    RET

Save_String:
    MOV     Dword Ptr [DI], EAX
    MOV     Dword Ptr [DI+4], EBX
    MOV     Dword Ptr [DI+8], ECX
    MOV     Dword Ptr [DI+12], EDX
    ADD     DI, 16
    RET

```

3.2.3.2 Displaying the Processor Name

The processor name is a right justified string padded with leading space characters. When displaying the processor name string, the display software must skip the leading space characters and discontinue printing characters when the NULL character is encountered.

Example 2. Displaying the Processor Brand String

```

        CLD
        MOV     SI, OFFSET Processor_Name
                                ; Point SI to the
                                ; name string

Spaces:

        LODSB
        CMP     AL, ' '           ; Skip leading space chars
        JE     Spaces
        CMP     AL, 0             ; Exit if NULL byte
                                ; encountered
        JE     Done

Display_Char:

        CALL   Display_Character ; Put a char on the
                                ; output device
        LODSB
        CMP     AL, 0             ; Exit if NULL byte
                                ; encountered
        JNE    Display_Char

Done:
    
```

3.2.4 Reserved (Function 80000005h)

3.2.5 Extended L2 Cache Features (Function 80000006h)

Functions 8000_0006h returns details of the L2 cache in the ECX register. The details returned are the line size, associativity, and the cache size described in 1024-byte units (see Table 3-16).

Table 3-16. L2 Cache Details

Register Bits	Description
EAX[31:0]	Reserved
EBX[31:0]	Reserved
ECX[31:16]	L2 Cache size described in 1024-byte units.

Register Bits	Description
ECX[15:12]	L2 Cache Associativity Encodings 00h Disabled 01h Direct mapped 02h 2-Way 04h 4-Way 06h 8-Way 08h 16-Way 0Fh Fully associative
ECX[11:8]	Reserved
ECX[7:0]	L2 Cache Line Size in bytes.
EDX[31:0]	Reserved

3.2.6 Reserved (Function 80000007h)

3.2.7 Virtual and Physical address Sizes (Function 80000008h)

On the Intel® Core™ Solo, Intel® Core™ Duo, Intel® Core™2 Duo processor family, when EAX is initialized to a value of 8000_0008h, the CPUID instruction will return the supported virtual and physical address sizes in EAX. Values in other general registers are reserved. This information is useful for BIOS to determine processor support for Intel® 64 Instruction Set Architecture (Intel® 64).

Table 3-17. Virtual and Physical Address Size Definitions

Register Bits	Description
EAX[31:16]	Reserved
EAX[15:8]	Virtual Address Size: Number of address bits supported by the processor for a virtual address.
EAX[7:0]	Physical Address Size: Number of address bits supported by the processor for a physical address.
EBX[31:0]	Reserved
ECX[31:0]	Reserved
EDX[31:0]	Reserved

§

4 Processor Serial Number

The processor serial number extends the concept of processor identification. Processor serial number is a 96-bit number accessible through the CPUID instruction. Processor serial number can be used by applications to identify a processor, and by extension, its system.

The processor serial number creates a software accessible identity for an individual processor. The processor serial number, combined with other qualifiers, could be applied to user identification. Applications include membership authentication, data backup/restore protection, removable storage data protection, managed access to files, or to confirm document exchange between appropriate users.

Processor serial number is another tool for use in asset management, product tracking, remote systems load and configuration, or to aid in boot-up configuration. In the case of system service, processor serial number could be used to differentiate users during help desk access, or track error reporting. Processor serial number provides an identifier for the processor, but should not be assumed to be unique in itself. There are potential modes in which erroneous processor serial numbers may be reported. For example, in the event a processor is operated outside its recommended operating specifications, (e.g., voltage, frequency, etc.) the processor serial number may not be correctly read from the processor. Improper BIOS or software operations could yield an inaccurate processor serial number. These events could lead to possible erroneous or duplicate processor serial numbers being reported. System manufacturers can strengthen the robustness of the feature by including redundancy features, or other fault tolerant methods.

Processor serial number used as a qualifier for another independent number could be used to create an electrically accessible number that is likely to be distinct. Processor serial number is one building block useful for the purpose of enabling the trusted, connected PC.

4.1 Presence of Processor Serial Number

To determine if the processor serial number feature is supported, the program should set the EAX register parameter value to “1” and then execute the CPUID instruction as follows:

```
MOV  EAX, 01H
CPUID
```

After execution of the CPUID instruction, the ECX and EDX register contains the Feature Flags. If the PSN Feature Flags, (EDX register, bit 18) equals “1”, the processor serial number feature is supported, and enabled. **If the PSN Feature Flags equals “0”, the processor serial number feature is either not supported, or disabled in a Pentium III processor.**



4.2 Forming the 96-bit Processor Serial Number

The 96-bit processor serial number is the concatenation of three 32-bit entities.

To access the most significant 32-bits of the processor serial number the program should set the EAX register parameter value to “1” and then execute the CUID instruction as follows:

```
MOV  EAX, 01H
CUID
```

After execution of the CUID instruction, the EAX register contains the Processor Signature. The Processor Signature comprises the most significant 32-bits of the processor serial number. The value in EAX should be saved prior to gathering the remaining 64-bits of the processor serial number.

To access the remaining 64-bits of the processor serial number the program should set the EAX register parameter value to “3” and then execute the CUID instruction as follows:

```
MOV  EAX, 03H
CUID
```

After execution of the CUID instruction, the EDX register contains the middle 32-bits, and the ECX register contains the least significant 32-bits of the processor serial number. Software may then concatenate the saved Processor Signature, EDX, and ECX before returning the complete 96-bit processor serial number.

Processor serial number should be displayed as 6 groups of 4 hex nibbles (Ex. XXXX-XXXX-XXXX-XXXX-XXXX-XXXX where X represents a hex digit). Alpha hex characters should be displayed as capital letters.

§

5 Brand ID and Brand String

5.1 Brand ID

Beginning with the Pentium III processors, model 8, the Pentium III Xeon processors, model 8, and Celeron processor, model 8, the concept of processor identification is further extended with the addition of Brand ID. Brand ID is an 8-bit number accessible through the CPUID instruction. Brand ID may be used by applications to assist in identifying the processor.

Processors that implement the Brand ID feature return the Brand ID in bits 7 through 0 of the EBX register when the CPUID instruction is executed with EAX=1 (see Table 5-1). Processors that do not support the feature return a value of 0 in EBX bits 7 through 0.

To differentiate previous models of the Pentium II processor, Pentium II Xeon processor, Celeron processor, Pentium III processor and Pentium III Xeon processor, application software relied on the L2 cache descriptors. In a few cases, the results were ambiguous; for example, software could not accurately differentiate a Pentium II processor from a Pentium II Xeon processor with a 512-KB L2 cache. Brand ID eliminates this ambiguity by providing a software accessible value unique to each processor brand. Table 5-1 shows the values defined for each processor.

5.2 Brand String

The Brand string is a new extension to the CPUID instruction implemented in some Intel IA-32 processors, including the Pentium 4 processor. Using the brand string feature, future IA-32 architecture based processors will return their ASCII brand identification string and maximum operating frequency via an extended CPUID instruction. Note that the frequency returned is the maximum operating frequency that the processor has been qualified for and not the current operating frequency of the processor.

When CPUID is executed with EAX set to the values listed in , the processor will return an ASCII brand string in the general-purpose registers as detailed in .

The brand/frequency string is defined to be 48 characters long, 47 bytes will contain characters and the 48th byte is defined to be NULL (0). A processor may return less than the 47 ASCII characters as long as the string is null terminated and the processor returns valid data when CPUID is executed with EAX = 80000002h, 80000003h and 80000004h.

The cpuid3a.asm program shows how software forms the brand string (see Example 1). To determine if the brand string is supported on a processor, software must follow the step below:

1. Execute the CPUID instruction with EAX=80000000h
2. If ((returned value in EAX) > 80000000h) then the processor supports the extended CPUID functions and EAX contains the largest extended function supported.
3. The processor brand string feature is supported if EAX >= 80000004h


Table 5-1. Brand ID, CPUID (EAX=1) Return Values in EBX (bits 7 through 0)

Value	Description
00h	Unsupported
01h	Intel® Celeron® processor
02h	Intel® Pentium® III processor
03h	Intel® Pentium® III Xeon® processor If processor signature = 000006B1h, then "Intel® Celeron® processor"
04h	Intel® Pentium® III processor
06h	Mobile Intel® Pentium® III Processor-M
07h	Mobile Intel® Celeron® processor
08h	Intel® Pentium® 4 processor If processor signature is >=00000F13h, then "Intel® Genuine processor"
09h	Intel® Pentium® 4 processor
0Ah	Intel® Celeron® Processor
0Bh	Intel® Xeon® processor If processor signature is <00000F13h, then "Intel® Xeon® processor MP"
0Ch	Intel® Xeon® processor MP
0Eh	Mobile Intel® Pentium® 4 processor-M If processor signature is <00000F13h, then "Intel® Xeon® processor"
0Fh	Mobile Intel® Celeron® processor
11h	Mobile Genuine Intel® processor
12h	Intel® Celeron® M processor
13h	Mobile Intel® Celeron® processor
14h	Intel® Celeron® Processor
15h	Mobile Genuine Intel® processor
16h	Intel® Pentium® M processor
17h	Mobile Intel® Celeron® processor
All other values	Reserved

Table 5-2. Processor Brand String Feature

EAX Input Value	Function	Return Value
80000000h	Largest Extended Function Supported	EAX=Largest supported extended function number, EBX = ECX = EDX = Reserved
80000001h	Extended Processor Signature and Extended Feature Bits	EDX and ECX contain Extended Feature Flags EAX = EBX = Reserved
80000002h	Processor Brand String	EAX, EBX, ECX, EDX contain ASCII brand string
80000003h	Processor Brand String	EAX, EBX, ECX, EDX contain ASCII brand string
80000004h	Processor Brand String	EAX, EBX, ECX, EDX contain ASCII brand string

§

6 Usage Guidelines

This document presents Intel-recommended feature-detection methods. Software should not try to identify features by exploiting programming tricks, undocumented features, or otherwise deviating from the guidelines presented in this application note.

The following guidelines are intended to help programmers maintain the widest range of compatibility for their software.

- Do not depend on the absence of an invalid opcode trap on the CPUID opcode to detect the CPUID instruction. Do not depend on the absence of an invalid opcode trap on the PUSHFD opcode to detect a 32-bit processor. Test the ID flag, as described in Section 2 and shown in Section 7.
- **Do not assume that a given family or model has any specific feature. For example, do not assume the family value 5 (Pentium processor) means there is a floating-point unit on-chip. Use the feature flags for this determination.**
- Do not assume processors with higher family or model numbers have all the features of a processor with a lower family or model number. For example, a processor with a family value of 6 (P6 family processor) may not necessarily have all the features of a processor with a family value of 5.
- Do not assume that the features in the OverDrive processors are the same as those in the OEM version of the processor. Internal caches and instruction execution might vary.
- Do not use undocumented features of a processor to identify steppings or features. For example, the Intel386 processor A-step had bit instructions that were withdrawn with the B-step. Some software attempted to execute these instructions and depended on the invalid-opcode exception as a signal that it was not running on the A-step part. The software failed to work correctly when the Intel486 processor used the same opcodes for different instructions. The software should have used the stepping information in the processor signature.
- Test feature flags individually and do not make assumptions about undefined bits. For example, it would be a mistake to test the FPU bit by comparing the feature register to a binary 1 with a compare instruction.
- Do not assume the clock of a given family or model runs at a specific frequency, and do not write processor speed-dependent code, such as timing loops. For instance, an OverDrive Processor could operate at a higher internal frequency and still report the same family and/or model. Instead, use a combination of the system's timers to measure elapsed time and the TSC (Time-Stamp Counter) to measure processor core clocks to allow direct calibration of the processor core. See Section 11 and Example 6 for details.
- Processor model-specific registers may differ among processors, including in various models of the Pentium processor. Do not use these registers unless identified for the installed processor. This is particularly important for systems upgradeable with an OverDrive processor. Only use Model Specific registers that are defined in the BIOS writers guide for that processor.
- Do not rely on the result of the CPUID algorithm when executed in virtual 8086 mode.
- Do not assume any ordering of model and/or stepping numbers. They are assigned arbitrarily.



- Do not assume processor serial number is a unique number without further qualifiers.
- Display processor serial number as 6 groups of 4 hex nibbles (Ex. XXXX-XXXX-XXXX-XXXX-XXXX-XXXX where X represents a hex digit).
- Display alpha hex characters as capital letters.
- A zero in the lower 64 bits of the processor serial number indicate the processor serial number is invalid, not supported, or disabled on this processor.

§

7 Proper Identification Sequence

To identify the processor using the CUID instructions, software should follow the following steps.

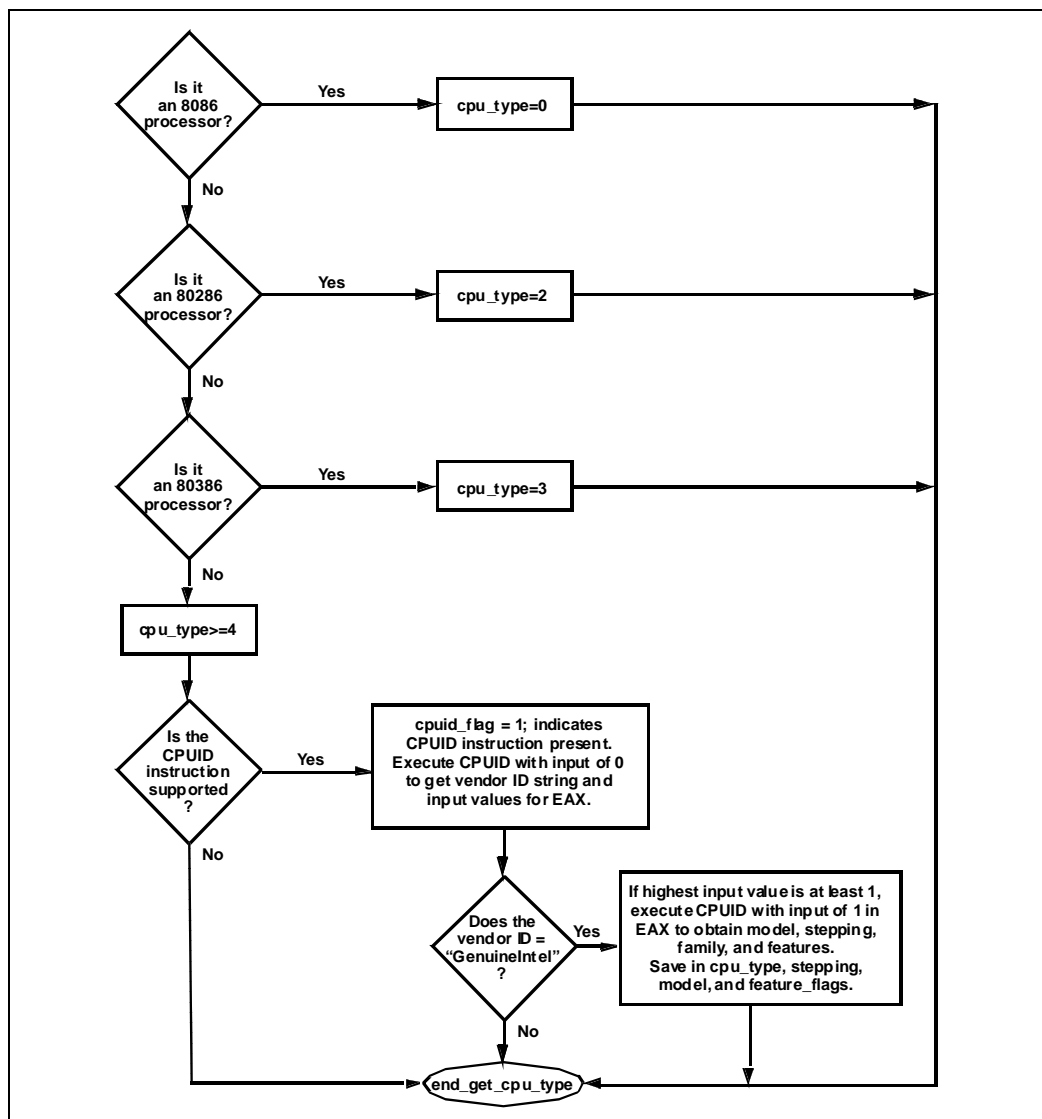
1. Determine if the CUID instruction is supported by modifying the ID flag in the EFLAGS register. If the ID flag cannot be modified, the processor cannot be identified using the CUID instruction.
2. Execute the CUID instruction with EAX equal to 80000000h. CUID function 80000000h is used to determine if Brand String is supported. If the CUID function 80000000h returns a value in EAX greater than or equal to 80000004h the Brand String feature is supported and software should use CUID functions 80000002h through 80000004h to identify the processor.
3. If the Brand String feature is not supported, execute CUID with EAX equal to 1. CUID function 1 returns the processor signature in the EAX register, and the Brand ID in the EBX register bits 0 through 7. If the EBX register bits 0 through 7 contain a non-zero value, the Brand ID is supported. Software should scan the list of Brand IDs (see Table 5-1) to identify the processor.
4. If the Brand ID feature is not supported, software should use the processor signature (see) in conjunction with the cache descriptors (see) to identify the processor.

The `cuid3a.asm` program example demonstrates the correct use of the CUID instruction (see Example 1). It also shows how to identify earlier processor generations that do not implement the Brand String, Brand ID, processor signature or CUID instruction (see Figure 7-1). This program example contains the following two procedures:

- `get_cpu_type` identifies the processor type. Figure 7-1 illustrates the flow of this procedure.
- `get_fpu_type` determines the type of floating-point unit (FPU) or math coprocessor (MCP).

This procedure has been tested with 8086, 80286, Intel386, Intel486, Pentium processor, Pentium processor with MMX technology, OverDrive processor with MMX technology, Pentium Pro processors, Pentium II processors, Pentium II Xeon processors, Pentium II Overdrive processors, Celeron processors, Pentium III processors, Pentium III Xeon processors and Pentium 4 processors. This program example is written in assembly language and is suitable for inclusion in a run-time library, or as system calls in operating systems.

Figure 7-1. Flow of Processor get_cpu_type Procedure

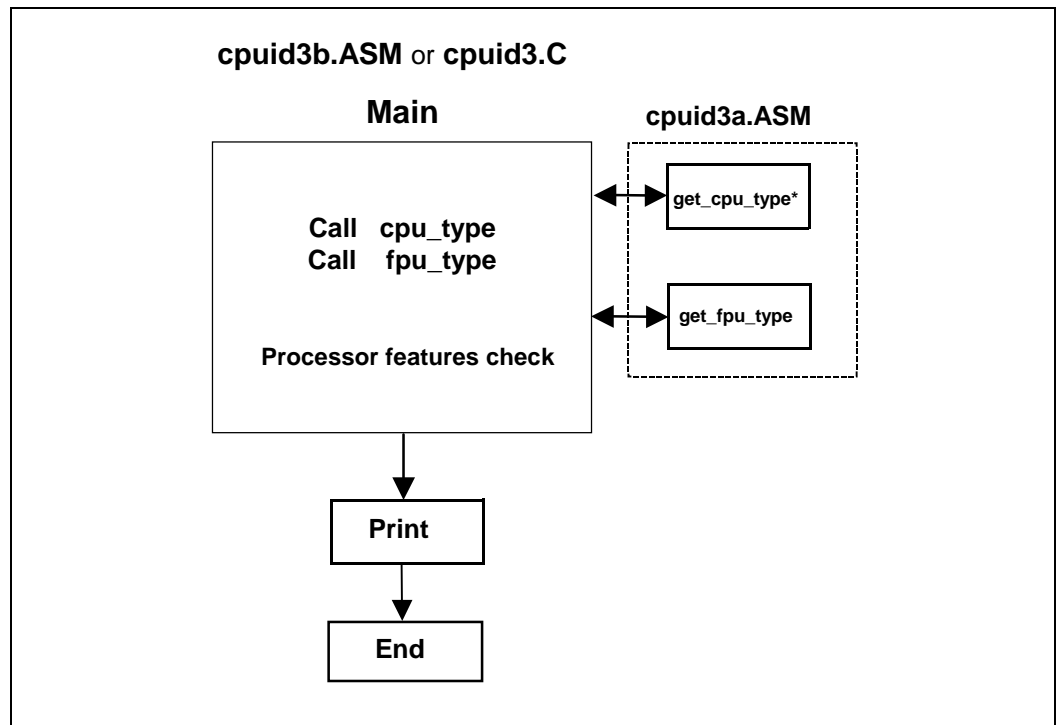


§

8 Usage Program Examples

The cpuid3b.asm or cpuid3.c program examples demonstrate applications that call get_cpu_type and get_fpu_type procedures and interpret the returned information. This code is shown in Example 4 and Example 5. The results, which are displayed on the monitor, identify the installed processor and features. The cpuid3b.asm example is written in assembly language and demonstrates an application that displays the returned information in the DOS environment. The cpuid3.c example is written in the C language (see Example 4 and Example 5). Figure 8-1 presents an overview of the relationship between the three program examples.

Figure 8-1. Flow of Processor Identification Extraction Procedure



§



9 *Alternate Method of Detecting Features*

Some feature flags indicate support of instruction set extensions (i.e. MMX, SSE and SSE2). The preferred mechanism for determining support of instruction extensions is through the use of the CPUID instruction, and testing the feature flags. However, an alternate method for determining processor support of instruction extensions is to install an exception handler and execute one of the instructions. If the instruction executes without generating an exception, then the processor supports that set of instruction extensions. If an exception is raised, and the exception handler is executed, then those instruction extensions are not supported by the processor. Before installing the exception handler, the software should execute the CPUID instruction with EAX = 0. If the CPUID instruction returns the Intel vendor-ID string “GenuineIntel”, then software knows that it can test for the Intel instruction extensions. As long as the CPUID instruction returns the Intel vendor-ID, this method can be used to support future Intel processors. This method does not require software to check the family and model.

The features.cpp program is written using the C++ language (see Example 6) and demonstrates the use of exceptions to determine support of SSE3, SSE2, SSE, and MMX instruction extensions. Features.cpp performs the following steps:

1. Check that the vendor-ID == “GenuineIntel”
2. Install exception handler for SSE3 test
3. Attempt to execute a SSE3 instruction (`haddpd xmm1, xmm2`)
4. Install exception handler for SSE2 test
5. Attempt to execute a SSE2 instruction (`paddq xmm1, xmm2`)
6. Install exception handler for SSE test
7. Attempt to execute a SSE instruction (`orps xmm1, xmm2`)
8. Install exception handler for MMX test
9. Attempt to execute a MMX instruction (`emms`)
10. Print supported instruction set extensions.

§



10 Denormals Are Zero

With the introduction of the SSE2 extensions, some Intel Architecture processors have the ability to convert SSE and SSE2 source operand denormal numbers to zero. This feature is referred to as Denormals-Are-Zero (DAZ). The DAZ mode is not compatible with IEEE Standard 754. The DAZ mode is provided to improve processor performance for applications such as streaming media processing, where rounding a denormal operand to zero does not appreciably affect the quality of the processed data.

Some processor steppings support SSE2 but do not support the DAZ mode. To determine if a processor supports the DAZ mode, software must perform the following steps.

1. Execute the CPUID instruction with an input value of EAX=0 and ensure the vendor-ID string returned is “GenuineIntel”.
2. Execute the CPUID instruction with EAX=1. This will load the EDX register with the feature flags.
3. Ensure that the FXSR feature flag (EDX bit 24) is set. This indicates the processor supports the FXSAVE and FXRSTOR instructions.
4. Ensure that the XMM feature flag (EDX bit 25) or the EMM feature flag (EDX bit 26) is set. This indicates that the processor supports at least one of the SSE/SSE2 instruction sets and its MXCSR control register.
5. Zero a 16-byte aligned, 512-byte area of memory. This is necessary since some implementations of FXSAVE do not modify reserved areas within the image.
6. Execute an FXSAVE into the cleared area.
7. Bytes 28-31 of the FXSAVE image are defined to contain the MXCSR_MASK. If this value is 0, then the processors MXCSR_MASK is 0xFFBF, otherwise MXCSR_MASK is the value of this dword.
8. If bit 6 of the MXCSR_MASK is set, then DAZ is supported.

After completing this algorithm, if DAZ is supported, software can enable DAZ mode by setting bit 6 in the MXCSR register save area and executing the FXRSTOR instruction. Alternately software can enable DAZ mode by setting bit 6 in the MXCSR by executing the LDMXCSR instruction. Refer to the chapter titled “Programming with the Streaming SIMD Extensions (SSE)” in the Intel Architecture Software Developer’s Manual volume 1: Basic Architecture.

The assembly language program `dazdetect.asm` (see Example 7) demonstrates this DAZ detection algorithm.

§



11 Operating Frequency

With the introduction of the Time-Stamp Counter, it is possible for software operating in real mode or protected mode with ring 0 privilege to calculate the actual operating frequency of the processor. To calculate the operating frequency, the software needs a reference period. The reference period can be a periodic interrupt, or another timer that is based on time, and not based on a system clock. Software needs to read the Time-Stamp Counter (TSC) at the beginning and ending of the reference period. Software can read the TSC by executing the RDTSC instruction, or by setting the ECX register to 10h and executing the RDMSR instruction. Both instructions copy the current 64-bit TSC into the EDX:EAX register pair.

To determine the operating frequency of the processor, software performs the following steps. The assembly language program `freqenc.asm` (see Example 8) demonstrates the frequency detection algorithm.

1. Execute the CPUID instruction with an input value of EAX=0 and ensure the vendor-ID string returned is “GenuineIntel”.
2. Execute the CPUID instruction with EAX=1 to load the EDX register with the feature flags.
3. Ensure that the TSC feature flag (EDX bit 4) is set. This indicates the processor supports the Time-Stamp Counter and RDTSC instruction.
4. Read the TSC at the beginning of the reference period.
5. Read the TSC at the end of the reference period.
6. Compute the TSC delta from the beginning and ending of the reference period.
7. Compute the actual frequency by dividing the TSC delta by the reference period.

Actual frequency = (Ending TSC value – Beginning TSC value) / reference period

Note: The measured accuracy is dependent on the accuracy of the reference period. A longer reference period produces a more accurate result. In addition, repeating the calculation multiple times may also improve accuracy.



Intel processors that support the C0_MCNT (C0 maximum frequency clock count) register improve on the ability to calculate the C0 state frequency by provide a resetable free running counter. To use the C0_MCNT register to determine frequency, software should clear the register by a write of '0' while the core is in a C0 state. Subsequently, at the end of a reference period read the C0_MCNT register. The actual frequency is calculated by dividing the C0_MCNT register value by the reference period. See the following steps and assembly language program frequenc.asm (see Example 8) as reference.

1. Execute the CPUID instruction with an input value of EAX=0 and ensure the vendor-ID string returned is "GenuineIntel".
2. Execute the CPUID instruction with EAX=1 to load the EAX register with the Processor Signature value.
3. Ensure that the processor is belonging to Intel Core 2 Duo processors family. This indicates the processor supports the Maximum Frequency Clock Count.
4. Clear the C0_MCNT register at the beginning of the reference period.
5. Read the C0_MCNT register at the end of the reference period.
6. Compute the actual frequency by dividing the C0_MCNT delta by the reference period.

Actual frequency = Ending C0_MCNT value / reference period

§

12 Program Examples

Example 3. Processor Identification Extraction Procedure

```

;      Filename: cpuid3a.asm
;      Copyright (c) Intel Corporation 1993-2005
;
;      This program has been developed by Intel Corporation. Intel
;      has various intellectual property rights which it may assert
;      under certain circumstances, such as if another
;      manufacturer's processor mis-identifies itself as being
;      "GenuineIntel" when the CPUID instruction is executed.
;
;      Intel specifically disclaims all warranties, express or
;      implied, and all liability, including consequential and other
;      indirect damages, for the use of this program, including
;      liability for infringement of any proprietary rights,
;      and including the warranties of merchantability and fitness
;      for a particular purpose. Intel does not assume any
;      responsibility for any errors which may appear in this program
;      nor any responsibility to update it.
;
;      This code contains two procedures:
;      _get_cpu_type: Identifies processor type in _cpu_type:
;                    0=8086/8088 processor
;                    2=Intel 286 processor
;                    3=Intel386(TM) family processor
;                    4=Intel486(TM) family processor
;                    5=Pentium(R) family processor
;                    6=P6 family of processors
;                    F=Pentium 4 family of processors
;
;      _get_fpu_type: Identifies FPU type in _fpu_type:
;                    0=FPU not present
;                    1=FPU present
;                    2=287 present (only if cpu_type=3)
;                    3=387 present (only if cpu_type=3)
;
;      This program has been tested with the Microsoft Developer Studio.
;      This code correctly detects the current Intel 8086/8088,
;      80286, 80386, 80486, Pentium(R) processor, Pentium(R) Pro
;      processor, Pentium(R) II processor, Pentium II Xeon(R) processor,
;      Pentium II Overdrive(R), Intel Celeron processor, Pentium III processor,
;      Pentium III Xeon processor, Pentium 4 processors and
;      Intel(R) Xeon(R) processors.
;
;      NOTE: When using this code with C program cpuid3.c, 32-bit

```

```

;           segments are recommended.

;           To assemble this code with TASM, add the JUMPS directive.
;           jumps           ; Uncomment this line for TASM

           TITLE  cpuid3a
;
;           comment this line for 32-bit segments
;
DOSSEG
;
;           uncomment the following 2 lines for 32-bit segments
;
;           .386
;           .model  flat
;
;           comment this line for 32-bit segments
;
           .model  small

CPU_IDMACRO
           db      0fh           ; Hardcoded CPUID instruction
           db      0a2h
ENDM

.data
public  _cpu_type
public  _fpu_type
public  _v86_flag
public  _cpuid_flag
public  _intel_CPU
public  _vendor_id
public  _cpu_signature
public  _features_ebx
public  _features_ecx
public  _features_edx
public  _ext_funct_1_eax
public  _ext_funct_1_ebx
public  _ext_funct_1_ecx
public  _ext_funct_1_edx
public  _ext_funct_6_eax
public  _ext_funct_6_ebx
public  _ext_funct_6_ecx
public  _ext_funct_6_edx
public  _ext_funct_8_eax
public  _ext_funct_8_ebx
public  _ext_funct_8_ecx
public  _ext_funct_8_edx
public  _cache_eax
public  _cache_ebx
public  _cache_ecx

```

```

public  _cache_edx
public  _dcp_cache_eax
public  _dcp_cache_ebx
public  _dcp_cache_ecx
public  _dcp_cache_edx
public  _sep_flag
public  _brand_string

_cpu_type      db      0
_fpu_type      db      0
_v86_flag      db      0
_cpuid_flag     db      0
_intel_CPU      db      0
_sep_flag      db      0
_vendor_id     db      "-----"
intel_id      db      "GenuineIntel"
_cpu_signature dd      0
_features_ebx  dd      0
_features_ecx  dd      0
_features_edx  dd      0
_ext_funct_1_eax      dd      0
_ext_funct_1_ebx      dd      0
_ext_funct_1_ecx      dd      0
_ext_funct_1_edx      dd      0
_ext_funct_6_eax      dd      0
_ext_funct_6_ebx      dd      0
_ext_funct_6_ecx      dd      0
_ext_funct_6_edx      dd      0
_ext_funct_8_eax      dd      0
_ext_funct_8_ebx      dd      0
_ext_funct_8_ecx      dd      0
_ext_funct_8_edx      dd      0
_cache_eax      dd      0
_cache_ebx      dd      0
_cache_ecx      dd      0
_cache_edx      dd      0
_dcp_cache_eax dd      0
_dcp_cache_ebx dd      0
_dcp_cache_ecx dd      0
_dcp_cache_edx dd      0

fp_status      dw      0
_brand_string   db      48 dup (0)

.code
;
;      comment this line for 32-bit segments
;
.8086
;
;      uncomment this line for 32-bit segments
;

```

```

; .386
;
;*****
public  _get_cpu_type
_get_cpu_type  proc

; This procedure determines the type of processor in a system
; and sets the _cpu_type variable with the appropriate
; value. If the CPUID instruction is available, it is used
; to determine more specific details about the processor.
; All registers are used by this procedure, none are preserved.
; To avoid AC faults, the AM bit in CR0 must not be set.

; Intel 8086 processor check
; Bits 12-15 of the FLAGS register are always set on the
; 8086 processor.

;
; For 32-bit segments comment the following lines down to the next
; comment line that says "STOP"
;
check_8086:
    pushf                ; push original FLAGS
    pop  ax              ; get original FLAGS
    mov  cx, ax          ; save original FLAGS
    and  ax, 0fffh       ; clear bits 12-15 in FLAGS
    push ax              ; save new FLAGS value on stack
    popf                 ; replace current FLAGS value
    pushf                 ; get new FLAGS
    pop  ax              ; store new FLAGS in AX
    and  ax, 0f000h      ; if bits 12-15 are set, then
    cmp  ax, 0f000h      ; processor is an 8086/8088
    mov  _cpu_type, 0    ; turn on 8086/8088 flag
    jne  check_80286     ; go check for 80286
    push sp              ; double check with push sp
    pop  dx              ; if value pushed was different
    cmp  dx, sp          ; means it's really an 8086
    jne  end_cpu_type    ; jump if processor is 8086/8088
    mov  _cpu_type, 10h  ; indicate unknown processor
    jmp  end_cpu_type

; Intel 286 processor check
; Bits 12-15 of the FLAGS register are always clear on the
; Intel 286 processor in real-address mode.

.286
check_80286:
    smsw ax              ; save machine status word
    and  ax, 1           ; isolate PE bit of MSW
    mov  _v86_flag, al   ; save PE bit to indicate V86

    or   cx, 0f000h     ; try to set bits 12-15

```

```

        push    cx                ; save new FLAGS value on stack
        popf                   ; replace current FLAGS value
        pushf                   ; get new FLAGS
        pop     ax                ; store new FLAGS in AX
        and    ax, 0f000h        ; if bits 12-15 are clear
        mov    _cpu_type, 2      ; processor=80286, turn on 80286 flag
        jz    end_cpu_type       ; jump if processor is 80286

; Intel386 processor check
; The AC bit, bit #18, is a new bit introduced in the EFLAGS
; register on the Intel486 processor to generate alignment
; faults.
; This bit cannot be set on the Intel386 processor.

.386
;
; "STOP"
;
;                                     ; it is safe to use 386 instructions
check_80386:
    pushfd                   ; push original EFLAGS
    pop     eax                ; get original EFLAGS
    mov    ecx, eax           ; save original EFLAGS
    xor    eax, 40000h        ; flip AC bit in EFLAGS
    push  eax                  ; save new EFLAGS value on stack
    popfd                   ; replace current EFLAGS value
    pushfd                   ; get new EFLAGS
    pop     eax                ; store new EFLAGS in EAX
    xor    eax, ecx           ; can't toggle AC bit, processor=80386
    mov    _cpu_type, 3      ; turn on 80386 processor flag
    jz    end_cpu_type       ; jump if 80386 processor
    push  ecx
    popfd                   ; restore AC bit in EFLAGS first

; Intel486 processor check
; Checking for ability to set/clear ID flag (Bit 21) in EFLAGS
; which indicates the presence of a processor with the CPUID
; instruction.

.486
check_80486:
    mov    _cpu_type, 4      ; turn on 80486 processor flag
    mov    eax, ecx           ; get original EFLAGS
    xor    eax, 200000h      ; flip ID bit in EFLAGS
    push  eax                  ; save new EFLAGS value on stack
    popfd                   ; replace current EFLAGS value
    pushfd                   ; get new EFLAGS
    pop     eax                ; store new EFLAGS in EAX
    xor    eax, ecx           ; can't toggle ID bit,
    je    end_cpu_type       ; processor=80486

; Execute CPUID instruction to determine vendor, family,

```



```

;      model, stepping and features. For the purpose of this
;      code, only the initial set of CPUID information is saved.

mov    _cpuid_flag, 1          ; flag indicating use of CPUID inst.
push   ebx                    ; save registers
push   esi
push   edi

mov    eax, 0                  ; set up for CPUID instruction
CPU_ID ; get and save vendor ID

mov    dword ptr _vendor_id, ebx
mov    dword ptr _vendor_id[+4], edx
mov    dword ptr _vendor_id[+8], ecx

cmp    dword ptr intel_id, ebx
jne    end_cpuid_type
cmp    dword ptr intel_id[+4], edx
jne    end_cpuid_type
cmp    dword ptr intel_id[+8], ecx
jne    end_cpuid_type        ; if not equal, not an Intel processor

mov    _intel_CPU, 1          ; indicate an Intel processor
cmp    eax, 1                  ; make sure 1 is valid input for CPUID
jl     end_cpuid_type        ; if not, jump to end

mov    eax, 1
CPU_ID ; get family/model/stepping/features

mov    _cpu_signature, eax
mov    _features_ebx, ebx
mov    _features_edx, edx
mov    _features_ecx, ecx

shr    eax, 8                  ; isolate family
and    eax, 0fh
mov    _cpu_type, al          ; set _cpu_type with family

;      Execute CPUID instruction to determine the cache descriptor
;      information.

mov    eax, 0                  ; set up to check the EAX value
CPU_ID
cmp    ax, 2                    ; Are cache descriptors supported?
jl     end_cpuid_type

mov    eax, 2                  ; set up to read cache descriptor
CPU_ID
cmp    al, 1                    ; Is one iteration enough to obtain
jne    end_cpuid_type        ; cache information?
; This code supports one iteration
; only.

```

```

mov    _cache_eax, eax    ; store cache information
mov    _cache_ebx, ebx    ; NOTE: for future processors, CPUID
mov    _cache_ecx, ecx    ; instruction may need to be run more
mov    _cache_edx, edx    ; than once to get complete cache
                                ; information

mov    eax, 0             ; set up to check the EAX value
CPU_ID
cmp    ax, 4              ; Are deterministic cache parameters supported?
jl     end_cpuid_type

mov    eax, 4             ; set up to read deterministic cache params
mov    ecx, 0
CPU_ID
push   eax
and    al, 1Fh            ; determine if valid cache parameters read
cmp    al, 00h           ; EAX[4:0] = 0 indicates invalid cache
pop    eax
je     end_cpuid_type

mov    _dcp_cache_eax, eax ; store deterministic cache information
mov    _dcp_cache_ebx, ebx
mov    _dcp_cache_ecx, ecx
mov    _dcp_cache_edx, edx

mov    eax, 80000000h     ; check if brand string is supported
CPU_ID
cmp    eax, 80000004h
jbe   end_cpuid_type    ; take jump if not supported

mov    eax, 80000001h     ; Get the Extended Feature Flags
CPU_ID

mov    _ext_funct_1_eax, eax
mov    _ext_funct_1_ebx, ebx
mov    _ext_funct_1_ecx, ecx
mov    _ext_funct_1_edx, edx

mov    di, offset _brand_string

mov    eax, 80000002h     ; get first 16 bytes of brand string
CPU_ID
mov    dword ptr [di], eax ; save bytes 0 .. 15
mov    dword ptr [di+4], ebx
mov    dword ptr [di+8], ecx
mov    dword ptr [di+12], edx
add    di, 16

mov    eax, 80000003h     ; save bytes 16 .. 31
CPU_ID
mov    dword ptr [di], eax
mov    dword ptr [di+4], ebx

```



```

mov     dword ptr [di+8], ecx
mov     dword ptr [di+12], edx
add     di, 16

mov     eax, 80000004h
CPU_ID
mov     dword ptr [di], eax           ; save bytes 32 .. 47
mov     dword ptr [di+4], ebx
mov     dword ptr [di+8], ecx
mov     dword ptr [di+12], edx

mov     eax, 80000000h               ; check if L2 Cache Features supported
CPU_ID
cmp     eax, 80000006h
jbe     end_cpuid_type               ; take jump if not supported

mov     _ext_funct_6_eax, eax
mov     _ext_funct_6_ebx, ebx
mov     _ext_funct_6_ecx, ecx
mov     _ext_funct_6_edx, edx

mov     eax, 80000000h               ; check if Address Size function supported
CPU_ID
cmp     eax, 80000008h
jbe     end_cpuid_type               ; take jump if not supported

mov     _ext_funct_8_eax, eax
mov     _ext_funct_8_ebx, ebx
mov     _ext_funct_8_ecx, ecx
mov     _ext_funct_8_edx, edx

end_cpuid_type:
pop     edi                           ; restore registers
pop     esi
pop     ebx
;
;   comment this line for 32-bit segments
;
; .8086
end_cpu_type:
ret
_get_cpu_type  endp

;*****

public  _get_fpu_type
_get_fpu_type  proc

;   This procedure determines the type of FPU in a system
;   and sets the _fpu_type variable with the appropriate value.
;   All registers are used by this procedure, none are preserved.

```

```

;      Coprocessor check
;      The algorithm is to determine whether the floating-point
;      status and control words are present.  If not, no
;      coprocessor exists.  If the status and control words can
;      be saved, the correct coprocessor is then determined
;      depending on the processor type.  The Intel386 processor can
;      work with either an Intel287 NDP or an Intel387 NDP.
;      The infinity of the coprocessor must be checked to determine
;      the correct coprocessor type.

      fninit                ; reset FP status word
      mov     fp_status, 5a5ah ; initialize temp word to non-zero
      fnstsw  fp_status      ; save FP status word
      mov     ax, fp_status  ; check FP status word
      cmp     al, 0          ; was correct status written
      mov     _fpu_type, 0   ; no FPU present
      jne     end_fpu_type

check_control_word:
      fnstcw  fp_status      ; save FP control word
      mov     ax, fp_status  ; check FP control word
      and     ax, 103fh      ; selected parts to examine
      cmp     ax, 3fh        ; was control word correct
      mov     _fpu_type, 0
      jne     end_fpu_type   ; incorrect control word, no FPU
      mov     _fpu_type, 1

;      80287/80387 check for the Intel386 processor

check_infinity:
      cmp     _cpu_type, 3
      jne     end_fpu_type
      fldl                    ; must use default control from FNINIT
      fldz                    ; form infinity
      fdiv                    ; 8087/Intel287 NDP say +inf = -inf
      fld     st               ; form negative infinity
      fchs                    ; Intel387 NDP says +inf <> -inf
      fcompp                   ; see if they are the same
      fstsw  fp_status        ; look at status from FCOMPP
      mov     ax, fp_status
      mov     _fpu_type, 2     ; store Intel287 NDP for FPU type
      sahf                    ; see if infinities matched
      jz     end_fpu_type     ; jump if 8087 or Intel287 is present
      mov     _fpu_type, 3     ; store Intel387 NDP for FPU type
end_fpu_type:
      ret
_get_fpu_type  endp

      end
    
```



Example 4. Processor Identification Procedure in Assembly Language

```

;   Filename: cpuid3b.asm
;   Copyright (c) Intel Corporation 1993-2005
;
;   This program has been developed by Intel Corporation. Intel
;   has various intellectual property rights which it may assert
;   under certain circumstances, such as if another
;   manufacturer's processor mis-identifies itself as being
;   "GenuineIntel" when the CPUID instruction is executed.
;
;   Intel specifically disclaims all warranties, express or
;   implied, and all liability, including consequential and
;   other indirect damages, for the use of this program,
;   including liability for infringement of any proprietary
;   rights, and including the warranties of merchantability and
;   fitness for a particular purpose. Intel does not assume any
;   responsibility for any errors which may appear in this
;   program nor any responsibility to update it.
;
;   This program contains three parts:
;   Part 1:  Identifies processor type in the variable
;            _cpu_type:
;
;   Part 2:  Identifies FPU type in the variable _fpu_type:
;
;   Part 3:  Prints out the appropriate message. This part is
;            specific to the DOS environment and uses the DOS
;            system calls to print out the messages.
;
;   This program has been tested with the Microsoft Developer Studio. If
;   this code is assembled with no options specified and linked
;   with the cpuid3a module, it correctly identifies the current
;   Intel 8086/8088, 80286, 80386, 80486, Pentium(R), Pentium(R) Pro,
;   Pentium(R) II processors, Pentium(R) II Xeon(R) processors, Pentium(R) II
;   Overdrive(R) processors, Intel(R) Celeron(R) processors, Pentium(R) III
;   processors, Pentium(R) III Xeon(R) processors, Pentium(R) 4 processors
;   and Intel(R) Xeon(R) processors DP and MP when executed in the
;   real-address mode.
;
;   NOTE: This code is written using 16-bit Segments
;
;   To assemble this code with TASM, add the JUMPS directive.
;   jumps                               ; Uncomment this line for TASM
;
;   TITLE  cpuid3b
;
DOSSEG
.model  small

.stack  100h

OP_O   MACRO
      db      66h                       ; hardcoded operand override
ENDM
.data

```

```

extrn          _cpu_type:      byte
extrn  _fpu_type:              byte
extrn  _cpuid_flag:            byte
extrn  _intel_CPU:             byte
extrn  _vendor_id:             byte
extrn  _cpu_signature:         dword
extrn  _features_ecx:          dword
extrn  _features_edx:          dword
extrn  _features_ebx:          dword
extrn  _ext_funct_1_eax:       dword
extrn  _ext_funct_1_ebx:       dword
extrn  _ext_funct_1_ecx:       dword
extrn  _ext_funct_1_edx:       dword
extrn  _ext_funct_6_eax:       dword
extrn  _ext_funct_6_ebx:       dword
extrn  _ext_funct_6_ecx:       dword
extrn  _ext_funct_6_edx:       dword
extrn  _ext_funct_8_eax:       dword
extrn  _ext_funct_8_ebx:       dword
extrn  _ext_funct_8_ecx:       dword
extrn  _ext_funct_8_edx:       dword
extrn  _cache_eax:             dword
extrn  _cache_ebx:             dword
extrn  _cache_ecx:             dword
extrn  _cache_edx:             dword
extrn  _dcp_cache_eax:         dword
extrn  _dcp_cache_ebx:         dword
extrn  _dcp_cache_ecx:         dword
extrn  _dcp_cache_edx:         dword
extrn  _brand_string:         byte

;
;   The purpose of this code is to identify the processor and
;   coprocessor that is currently in the system.  The program
;   first determines the processor type.  Then it determines
;   whether a coprocessor exists in the system.  If a
;   coprocessor or integrated coprocessor exists, the program
;   identifies the coprocessor type.  The program then prints
;   the processor and floating point processors present and type.
;

.code
.8086
start:
    mov     ax, @data
    mov     ds, ax                ; set segment register
    mov     es, ax                ; set segment register
    and     sp, not 3             ; align stack to avoid AC fault
    call    _get_cpu_type         ; determine processor type
    call    _get_fpu_type
    call    print

    mov     ax, 4c00h
    int     21h

;*****
;
;   extrn    _get_cpu_type: proc
;
;*****

```



```

extrn  _get_fpu_type: proc

;*****
FPU_FLAG      equ 0001h
VME_FLAG      equ 0002h
DE_FLAG       equ 0004h
PSE_FLAG      equ 0008h
TSC_FLAG      equ 0010h
MSR_FLAG      equ 0020h
PAE_FLAG      equ 0040h
MCE_FLAG      equ 0080h
CX8_FLAG      equ 0100h
APIC_FLAG     equ 0200h
SEP_FLAG      equ 0800h
MTRR_FLAG     equ 1000h
PGE_FLAG      equ 2000h
MCA_FLAG      equ 4000h
CMOV_FLAG     equ 8000h
PAT_FLAG      equ 10000h
PSE36_FLAG    equ 20000h
PSNUM_FLAG    equ 40000h
CLFLUSH_FLAG  equ 80000h
DTS_FLAG      equ 200000h
ACPI_FLAG     equ 400000h
MMX_FLAG      equ 800000h
FXSR_FLAG     equ 1000000h
SSE_FLAG      equ 2000000h
SSE2_FLAG     equ 4000000h
SS_FLAG       equ 8000000h
HTT_FLAG      equ 10000000h
TM_FLAG       equ 20000000h
IA64_FLAG     equ 40000000h
PBE_FLAG      equ 80000000h
SSE3_FLAG     equ 0001h
MONITOR_FLAG  equ 0008h
DS_CPL_FLAG   equ 0010h
EIST_FLAG     equ 0080h
TM2_FLAG      equ 0100h
SSSE3_FLAG    equ 0200h
CID_FLAG      equ 0400h
CX16_FLAG     equ 2000h
XTPR_FLAG     equ 04000h
DCA_FLAG      equ 040000h

EM64T_FLAG    equ 20000000h
XD_FLAG       equ 00100000h
SYSCALL_FLAG  equ 00000800h
LAHF_FLAG     equ 0000001h

.data
id_msg        db      "This system has a$"
cp_error      db      "n unknown processor$"
cp_8086       db      "n 8086/8088 processor$"
cp_286        db      "n 80286 processor$"
cp_386        db      "n 80386 processor$"

```



cp_486	db	"n 80486DX, 80486DX2 processor or"
	db	" 80487SX math coprocessor\$"
cp_486sx	db	"n 80486SX processor\$"
fp_8087	db	" and an 8087 math coprocessor\$"
fp_287	db	" and an 80287 math coprocessor\$"
fp_387	db	" and an 80387 math coprocessor\$"
intel486_msg	db	" Genuine Intel486(TM) processor\$"
intel486dx_msg	db	" Genuine Intel486(TM) DX processor\$"
intel486sx_msg	db	" Genuine Intel486(TM) SX processor\$"
inteldx2_msg	db	" Genuine IntelDX2(TM) processor\$"
intelsx2_msg	db	" Genuine IntelSX2(TM) processor\$"
inteldx4_msg	db	" Genuine IntelDX4(TM) processor\$"
inteldx2wb_msg	db	" Genuine Write-Back Enhanced"
	db	" IntelDX2(TM) processor\$"
pentium_msg	db	" Genuine Intel(R) Pentium(R) processor\$"
pentiumpro_msg	db	" Genuine Intel Pentium(R) Pro processor\$"
pentiumii_model3_msg	db	" Genuine Intel(R) Pentium(R) II processor, model 3\$"
pentiumii_xeon_m5_msg	db	" Genuine Intel(R) Pentium(R) II processor, model 5 or"
	db	" Intel(R) Pentium(R) II Xeon(R) processor\$"
pentiumii_xeon_msg	db	" Genuine Intel(R) Pentium(R) II Xeon(R) processor\$"
celeron_msg	db	" Genuine Intel(R) Celeron(R) processor, model 5\$"
celeron_model6_msg	db	" Genuine Intel(R) Celeron(R) processor, model 6\$"
celeron_brand	db	" Genuine Intel(R) Celeron(R) processor\$"
pentiumiii_msg	db	" Genuine Intel(R) Pentium(R) III processor, model 7 or"
	db	" Intel Pentium(R) III Xeon(R) processor, model 7\$"
pentiumiii_xeon_msg	db	" Genuine Intel(R) Pentium(R) III Xeon(R) processor, model 7\$"
pentiumiii_xeon_brand	db	" Genuine Intel(R) Pentium(R) III Xeon(R) processor\$"
pentiumiii_brand	db	" Genuine Intel(R) Pentium(R) III processor\$"
mobile_piii_brand	db	" Genuine Mobile Intel(R) Pentium(R) III Processor-M\$"
mobile_icp_brand	db	" Genuine Mobile Intel(R) Celeron(R) processor\$"
mobile_P4_brand	db	" Genuine Mobile Intel(R) Pentium(R) 4 processor - M\$"
pentium4_brand	db	" Genuine Intel(R) Pentium(R) 4 processor\$"
xeon_brand	db	" Genuine Intel(R) Xeon(R) processor\$"
xeon_mp_brand	db	" Genuine Intel(R) Xeon(R) processor MP\$"
mobile_icp_brand_2	db	" Genuine Mobile Intel(R) Celeron(R) processor\$"
mobile_pentium_m_brand	db	" Genuine Intel(R) Pentium(R) M processor\$"
mobile_genuine_brand	db	" Mobile Genuine Intel(R) processor\$"
mobile_icp_m_brand	db	" Genuine Intel(R) Celeron(R) M processor\$"
unknown_msg	db	"n unknown Genuine Intel(R) processor\$"
brand_entry	struct	
brand_value	db	?
brand_string	dw	?
brand_entry	ends	
brand_table	brand_entry	<01h, offset celeron_brand>
	brand_entry	<02h, offset pentiumiii_brand>
	brand_entry	<03h, offset pentiumiii_xeon_brand>
	brand_entry	<04h, offset pentiumiii_brand>
	brand_entry	<06h, offset mobile_piii_brand>
	brand_entry	<07h, offset mobile_icp_brand>
	brand_entry	<08h, offset pentium4_brand>
	brand_entry	<09h, offset pentium4_brand>
	brand_entry	<0Ah, offset celeron_brand>
	brand_entry	<0Bh, offset xeon_brand>

```

brand_entry    <0Ch, offset xeon_mp_brand>
brand_entry    <0Eh, offset mobile_p4_brand>
brand_entry    <0Fh, offset mobile_icp_brand>
brand_entry    <11h, offset mobile_genuine_brand>
brand_entry    <12h, offset mobile_icp_m_brand>
brand_entry    <13h, offset mobile_icp_brand_2>
brand_entry    <14h, offset celeron_brand>
brand_entry    <15h, offset mobile_genuine_brand>
brand_entry    <16h, offset mobile_pentium_m_brand>
brand_entry    <17h, offset mobile_icp_brand_2>

brand_table_size equ    ($ - offset brand_table) / (sizeof brand_entry)

; The following 16 entries must stay intact as an array
intel_486_0    dw    offset intel486dx_msg
intel_486_1    dw    offset intel486dx_msg
intel_486_2    dw    offset intel486sx_msg
intel_486_3    dw    offset inteldx2_msg
intel_486_4    dw    offset intel486_msg
intel_486_5    dw    offset intelsx2_msg
intel_486_6    dw    offset intel486_msg
intel_486_7    dw    offset inteldx2wb_msg
intel_486_8    dw    offset inteldx4_msg
intel_486_9    dw    offset intel486_msg
intel_486_a    dw    offset intel486_msg
intel_486_b    dw    offset intel486_msg
intel_486_c    dw    offset intel486_msg
intel_486_d    dw    offset intel486_msg
intel_486_e    dw    offset intel486_msg
intel_486_f    dw    offset intel486_msg
; end of array

family_msg    db    13,10,"Processor Family: $"
model_msg     db    13,10,"Model:      $"
stepping_msg  db    13,10,"Stepping:   $"
ext_fam_msg   db    13,10," Extended Family: $"
ext_mod_msg   db    13,10," Extended Model: $"
cr_1f        db    13,10,"$"
turbo_msg     db    13,10,"The processor is an OverDrive(R)"
              db    " processor$"
dp_msg        db    13,10,"The processor is the upgrade"
              db    " processor in a dual processor system$"
fpu_msg       db    13,10,"The processor contains an on-chip"
              db    " FPU$"
vme_msg       db    13,10,"The processor supports Virtual"
              db    " Mode Extensions$"
de_msg        db    13,10,"The processor supports Debugging"
              db    " Extensions$"
pse_msg       db    13,10,"The processor supports Page Size"
              db    " Extensions$"
tsc_msg       db    13,10,"The processor supports Time Stamp"
              db    " Counter$"
msr_msg       db    13,10,"The processor supports Model"
              db    " Specific Registers$"
pae_msg       db    13,10,"The processor supports Physical"
              db    " Address Extensions$"
mce_msg       db    13,10,"The processor supports Machine"
              db    " Check Exceptions$"

```

```

cx8_msg      db      13,10,"The processor supports the"
              db      " CMPXCHG8B instruction$"
apic_msg     db      13,10,"The processor contains an on-chip"
              db      " APIC$"
sep_msg      db      13,10,"The processor supports Fast System"
              db      " Call$"
no_sep_msg   db      13,10,"The processor does not support Fast"
              db      " System Call$"
mtrr_msg     db      13,10,"The processor supports Memory Type"
              db      " Range Registers$"
pge_msg      db      13,10,"The processor supports Page Global"
              db      " Enable$"
mca_msg      db      13,10,"The processor supports Machine"
              db      " Check Architecture$"
cmov_msg     db      13,10,"The processor supports Conditional"
              db      " Move Instruction$"
pat_msg      db      13,10,"The processor supports Page Attribute"
              db      " Table$"
pse36_msg    db      13,10,"The processor supports 36-bit Page"
              db      " Size Extension$"
psnum_msg    db      13,10,"The processor supports the"
              db      " processor serial number$"
clflush_msg  db      13,10,"The processor supports the"
              db      " CLFLUSH instruction$"
dts_msg      db      13,10,"The processor supports the"
              db      " Debug Trace Store feature$"
acpi_msg     db      13,10,"The processor supports the"
              db      " ACPI registers in MSR space$"
mmx_msg      db      13,10,"The processor supports Intel Architecture"
              db      " MMX(TM) Technology$"
fxsr_msg     db      13,10,"The processor supports Fast floating point"
              db      " save and restore$"
sse_msg      db      13,10,"The processor supports the Streaming"
              db      " SIMD extensions$"
sse2_msg     db      13,10,"The processor supports the Streaming"
              db      " SIMD extensions 2 instructions$"
ss_msg       db      13,10,"The processor supports Self-Snoop$"
htt_msg      db      13,10,"The processor supports Hyper-Threading Technology$"
tm_msg       db      13,10,"The processor supports the"
              db      " Thermal Monitor$"
ia64_msg     db      13,10,"The processor is a member of the"
              db      " Intel(R) Itanium(R) processor family executing in IA32 emulation mode$"
pbe_msg      db      13,10,"The processor supports the"
              db      " Pending Break Event$"
sse3_msg     db      13,10,"The processor supports the Streaming SIMD"
              db      " Extensions 3 instructions$"
monitor_msg  db      13,10,"The processor supports the MONITOR and MWAIT"
              db      " instructions$"
ds_cpl_msg   db      13,10,"The processor supports Debug Store extensions for"
              db      " branch message storage by CPL$"
eist_msg     db      13,10,"The processor supports"
              db      " Enhanced SpeedStep(TM) Technology$"
tm2_msg      db      13,10,"The processor supports the"
              db      " Thermal Monitor 2$"
ssse3_msg    db      13,10,"The processor supports the Supplemental Streaming SIMD"
              db      " Extensions 3 instructions$"
cid_msg      db      13,10,"The processor supports L1 Data Cache Context ID$"
cx16_msg     db      13,10,"The processor supports CMPXCHG16B instruction$"

```



```

xtp_r_msg      db      13,10,"The processor supports transmitting TPR messages$"
dca_msg        db      13,10,"The processor supports the Direct Cache Access feature$"
em64t_msg      db      13,10,"The processor supports Intel(R) Extended Memory 64 Technology$"
xd_bit_msg     db      13,10,"The processor supports the Execute Disable Bit$"
syscall_msg    db      13,10,"The processor supports the SYSCALL & SYSRET instructions$"
lahf_msg       db      13,10,"The processor supports the LAHF & SAHF instructions$"

not_intel      db      "t least an 80486 processor."
               db      13,10,"It does not contain a Genuine"
               db      "Intel part and as a result,"
               db      "the",13,10,"CPUID"
               db      " detection information cannot be"
               db      " determined at this time.$"

ASC_MSG        MACRO msg
LOCAL  ascii_done      ; local label
add    al, 30h
cmp    al, 39h          ; is it 0-9?
jle    ascii_done
add    al, 07h
ascii_done:
mov    byte ptr msg[20], al
mov    dx, offset msg
mov    ah, 9h
int    21h
ENDM

.code
.8086

print  proc

;      This procedure prints the appropriate cpuid string and
;      numeric processor presence status.  If the CPUID instruction
;      was used, this procedure prints out the CPUID info.
;      All registers are used by this procedure, none are
;      preserved.

mov    dx, offset id_msg      ; print initial message
mov    ah, 9h
int    21h

cmp    _cpuid_flag, 1        ; if set to 1, processor
                                ; supports CPUID instruction
je     print_cpuid_data      ; print detailed CPUID info

print_86:
cmp    _cpu_type, 0
jne    print_286
mov    dx, offset cp_8086
mov    ah, 9h
int    21h
cmp    _fpu_type, 0
je     end_print
mov    dx, offset fp_8087
mov    ah, 9h
int    21h
jmp    end_print

```

```

print_286:
    cmp     _cpu_type, 2
    jne    print_386
    mov    dx, offset cp_286
    mov    ah, 9h
    int    21h
    cmp    _fpu_type, 0
    je     end_print

print_287:
    mov    dx, offset fp_287
    mov    ah, 9h
    int    21h
    jmp    end_print

print_386:
    cmp    _cpu_type, 3
    jne    print_486
    mov    dx, offset cp_386
    mov    ah, 9h
    int    21h
    cmp    _fpu_type, 0
    je     end_print
    cmp    _fpu_type, 2
    je     print_287
    mov    dx, offset fp_387
    mov    ah, 9h
    int    21h
    jmp    end_print

print_486:
    cmp    _cpu_type, 4
    jne    print_unknown           ; Intel processors will have
    mov    dx, offset cp_486sx     ; CPUID instruction
    cmp    _fpu_type, 0
    je     print_486sx
    mov    dx, offset cp_486

print_486sx:
    mov    ah, 9h
    int    21h
    jmp    end_print

print_unknown:
    mov    dx, offset cp_error
    jmp    print_486sx

print_cpuid_data:
.486
    cmp    _intel_CPU, 1           ; check for genuine Intel
    jne    not_GenuineIntel       ; processor

    mov    di, offset _brand_string ; brand string supported?
    cmp    byte ptr [di], 0
    je     print_brand_id

    mov    cx, 47                  ; max brand string length
    
```

```

skip_spaces:
    cmp     byte ptr [di], ''           ; skip leading space chars
    jne     print_brand_string

    inc     di
    loop    skip_spaces

print_brand_string:
    cmp     cx, 0                       ; Nothing to print
    je      print_brand_id
    cmp     byte ptr [di], 0
    je      print_brand_id

print_brand_char:
    mov     dl, [di]                    ; print upto the max chars
    mov     ah, 2
    int     21h

    inc     di
    cmp     byte ptr [di], 0
    je      print_family
    loop    print_brand_char
    jmp     print_family

print_brand_id:
    cmp     _cpu_type, 6
    jb      print_486_type
    ja      print_pentiumiiiintel8_type

    mov     eax, dword ptr _cpu_signature
    shr     eax, 4
    and     al, 0fh
    cmp     al, 8
    jae     print_pentiumiiiintel8_type

print_486_type:
    cmp     _cpu_type, 4                 ; if 4, print 80486 processor
    jne     print_pentium_type
    mov     eax, dword ptr _cpu_signature
    shr     eax, 4
    and     eax, 0fh                     ; isolate model
    mov     dx, intel_486_0[eax*2]
    jmp     print_common

print_pentium_type:
    cmp     _cpu_type, 5                 ; if 5, print Pentium processor
    jne     print_pentiumpro_type
    mov     dx, offset pentium_msg
    jmp     print_common

print_pentiumpro_type:
    cmp     _cpu_type, 6                 ; if 6 & model 1, print Pentium
                                           ; Pro processor
    jne     print_unknown_type
    mov     eax, dword ptr _cpu_signature
    shr     eax, 4
    and     eax, 0fh                     ; isolate model

```

```

        cmp     eax, 3
        jge     print_pentiumiiimodel3_type
        cmp     eax, 1
        jne     print_unknown_type      ; incorrect model number = 2
        mov     dx, offset pentiumpro_msg
        jmp     print_common

print_pentiumiiimodel3_type:
        cmp     eax, 3                  ; if 6 & model 3, print Pentium
                                          ; II processor, model 3
        jne     print_pentiumiiimodel5_type
        mov     dx, offset pentiumiiimodel3_msg
        jmp     print_common

print_pentiumiiimodel5_type:
        cmp     eax, 5                  ; if 6 & model 5, either Pentium
                                          ; II processor, model 5, Pentium II
                                          ; Xeon processor or Intel Celeron
                                          ; processor, model 5
        je      celeron_xeon_detect

        cmp     eax, 7                  ; If model 7 check cache descriptors
                                          ; to determine Pentium III or Pentium III Xeon
        jne     print_celeronmodel6_type
celeron_xeon_detect:

; Is it Pentium II processor, model 5, Pentium II Xeon processor, Intel Celeron processor,
; Pentium III processor or Pentium III Xeon processor.

        mov     eax, dword ptr _cache_eax
        rol     eax, 8
        mov     cx, 3

celeron_detect_eax:
        cmp     al, 40h                 ; Is it no L2
        je      print_celeron_type
        cmp     al, 44h                 ; Is L2 >= 1M
        jae     print_pentiumiixeon_type

        rol     eax, 8
        loop    celeron_detect_eax

        mov     eax, dword ptr _cache_ebx
        mov     cx, 4

celeron_detect_ebx:
        cmp     al, 40h                 ; Is it no L2
        je      print_celeron_type
        cmp     al, 44h                 ; Is L2 >= 1M
        jae     print_pentiumiixeon_type

        rol     eax, 8
        loop    celeron_detect_ebx

        mov     eax, dword ptr _cache_ecx
        mov     cx, 4

celeron_detect_ecx:
    
```



```

    cmp     al, 40h                ; Is it no L2
    je     print_celeron_type
    cmp     al, 44h                ; Is L2 >= 1M
    jae     print_pentiumiixeon_type

    rol     eax, 8
    loop   celeron_detect_ecx

    mov     eax, dword ptr _cache_edx
    mov     cx, 4

celeron_detect_edx:
    cmp     al, 40h                ; Is it no L2
    je     print_celeron_type
    cmp     al, 44h                ; Is L2 >= 1M
    jae     print_pentiumiixeon_type

    rol     eax, 8
    loop   celeron_detect_edx

    mov     dx, offset pentiumiixeon_m5_msg
    mov     eax, dword ptr _cpu_signature
    shr     eax, 4
    and     eax, 0fh                ; isolate model
    cmp     eax, 5
    je     print_common
    mov     dx, offset pentiumiii_msg
    jmp     print_common

print_celeron_type:
    mov     dx, offset celeron_msg
    jmp     print_common

print_pentiumiixeon_type:
    mov     dx, offset pentiumiixeon_msg
    mov     ax, word ptr _cpu_signature
    shr     ax, 4
    and     eax, 0fh                ; isolate model
    cmp     eax, 5
    je     print_common
    mov     dx, offset pentiumiixeon_msg
    jmp     print_common

print_celeronmodel6_type:
    cmp     eax, 6                ; if 6 & model 6, print Intel Celeron
                                ; processor, model 6
    jne     print_pentiumiiimodel8_type
    mov     dx, offset celeronmodel6_msg
    jmp     print_common

print_pentiumiiimodel8_type:
    cmp     eax, 8                ; Pentium III processor, model 8, or
                                ; Pentium III Xeon processor, model 8
    jb     print_unknown_type

    mov     eax, dword ptr _features_ebx
    cmp     al, 0                ; Is brand_id supported?
    je     print_unknown_type

```

```

        mov     di, offset brand_table      ; Setup pointer to brand_id table
        mov     cx, brand_table_size      ; Get maximum entry count

next_brand:
        cmp     al, byte ptr [di]         ; Is this the brand reported by the processor
        je     brand_found

        add     di, sizeof brand_entry    ; Point to next Brand Defined
        loop   next_brand                 ; Check next brand if the table is not exhausted
        jmp    print_unknown_type

brand_found:
        mov     eax, dword ptr _cpu_signature
        cmp     eax, 06B1h                ; Check for Pentium III, model B, stepping 1
        jne    not_b1_celeron

        mov     dx, offset celeron_brand  ; Assume this is a the special case (see Table 9)
        cmp     byte ptr[di], 3           ; Is this a B1 Celeron?
        je     print_common

not_b1_celeron:
        cmp     eax, 0F13h
        jae    not_xeon_mp

        mov     dx, offset xeon_mp_brand  ; Early "Intel(R) Xeon(R) processor MP"?
        cmp     byte ptr [di], 0Bh
        je     print_common

        mov     dx, offset xeon_brand     ; Early "Intel(R) Xeon(R) processor"?
        cmp     byte ptr[di], 0Eh
        je     print_common

not_xeon_mp:
        mov     dx, word ptr [di+1]       ; Load DX with the offset of the brand string
        jmp    print_common

print_unknown_type:
        mov     dx, offset unknown_msg    ; if neither, print unknown
print_common:
        mov     ah, 9h
        int     21h

; print family, model, and stepping
print_family:
        mov     al, _cpu_type
        ASC_MSG     family_msg          ; print family msg

        mov     eax, dword ptr _cpu_signature
        and     ah, 0fh                  ; Check for Extended Family
        cmp     ah, 0fh
        jne    print_model
        mov     dx, offset ext_fam_msg
        mov     ah, 9h
        int     21h
        shr     eax, 20
        mov     ah, al                    ; Copy extended family into ah
        shr     al, 4
    
```



```

    and    ax, 0f0fh
    add    ah, '0'                ; Convert upper nibble to ascii
    add    al, '0'                ; Convert lower nibble to ascii
    push  ax
    mov    dl, al
    mov    ah, 2
    int    21h                    ; print upper nibble of ext family
    pop    ax
    mov    dl, ah
    mov    ah, 2
    int    21h                    ; print lower nibble of ext family

print_model:
    mov    eax, dword ptr _cpu_signature
    shr    ax, 4
    and    al, 0fh
    ASC_MSG    model_msg        ; print model msg

    mov    eax, dword ptr _cpu_signature
    and    al, 0f0h              ; Check for Extended Model
    cmp    ah, 0f0h
    jne    print_stepping
    mov    dx, offset ext_mod_msg
    mov    ah, 9h
    int    21h
    shr    eax, 16
    and    al, 0fh
    add    al, '0'                ; Convert extended model to ascii
    mov    dl, al
    mov    ah, 2
    int    21h                    ; print lower nibble of ext family

print_stepping:
    mov    eax, dword ptr _cpu_signature
    and    al, 0fh
    ASC_MSG    stepping_msg     ; print stepping msg

print_upgrade:
    mov    eax, dword ptr _cpu_signature
    test   ax, 1000h              ; check for turbo upgrade
    jz     check_dp
    mov    dx, offset turbo_msg
    mov    ah, 9h
    int    21h
    jmp    print_features

check_dp:
    test   ax, 2000h              ; check for dual processor
    jz     print_features
    mov    dx, offset dp_msg
    mov    ah, 9h
    int    21h

print_features:
    mov    eax, dword ptr _features_edx
    and    eax, FPU_FLAG          ; check for FPU
    jz     check_VME
    mov    dx, offset fpu_msg

```

```

    mov     ah, 9h
    int     21h

check_VME:
    mov     eax, dword ptr _features_edx
    and     eax, VME_FLAG           ; check for VME
    jz     check_DE
    mov     dx, offset vme_msg
    mov     ah, 9h
    int     21h

check_DE:
    mov     eax, dword ptr _features_edx
    and     eax, DE_FLAG           ; check for DE
    jz     check_PSE
    mov     dx, offset de_msg
    mov     ah, 9h
    int     21h

check_PSE:
    mov     eax, dword ptr _features_edx
    and     eax, PSE_FLAG         ; check for PSE
    jz     check_TSC
    mov     dx, offset pse_msg
    mov     ah, 9h
    int     21h

check_TSC:
    mov     eax, dword ptr _features_edx
    and     eax, TSC_FLAG        ; check for TSC
    jz     check_MSR
    mov     dx, offset tsc_msg
    mov     ah, 9h
    int     21h

check_MSR:
    mov     eax, dword ptr _features_edx
    and     eax, MSR_FLAG        ; check for MSR
    jz     check_PAE
    mov     dx, offset msr_msg
    mov     ah, 9h
    int     21h

check_PAE:
    mov     eax, dword ptr _features_edx
    and     eax, PAE_FLAG        ; check for PAE
    jz     check_MCE
    mov     dx, offset pae_msg
    mov     ah, 9h
    int     21h

check_MCE:
    mov     eax, dword ptr _features_edx
    and     eax, MCE_FLAG        ; check for MCE
    jz     check_CX8
    mov     dx, offset mce_msg
    mov     ah, 9h
    int     21h

```



```

check_CX8:
    mov     eax, dword ptr _features_edx
    and     eax, CX8_FLAG           ; check for CMPXCHG8B
    jz      check_APIC
    mov     dx, offset cx8_msg
    mov     ah, 9h
    int     21h

check_APIC:
    mov     eax, dword ptr _features_edx
    and     eax, APIC_FLAG         ; check for APIC
    jz      check_SEP
    mov     dx, offset apic_msg
    mov     ah, 9h
    int     21h

check_SEP:
    mov     eax, dword ptr _features_edx
    and     eax, SEP_FLAG         ; Check for Fast System Call
    jz      check_MTRR

    cmp     _cpu_type, 6           ; Determine if Fast System
    jne     print_sep             ; Calls are supported.

    mov     eax, dword ptr _cpu_signature
    cmp     al, 33h
    jb     print_no_sep

print_sep:
    mov     dx, offset sep_msg
    mov     ah, 9h
    int     21h
    jmp     check_MTRR

print_no_sep:
    mov     dx, offset no_sep_msg
    mov     ah, 9h
    int     21h

check_MTRR:
    mov     eax, dword ptr _features_edx
    and     eax, MTRR_FLAG        ; check for MTRR
    jz      check_PGE
    mov     dx, offset mtrr_msg
    mov     ah, 9h
    int     21h

check_PGE:
    mov     eax, dword ptr _features_edx
    and     eax, PGE_FLAG         ; check for PGE
    jz      check_MCA
    mov     dx, offset pge_msg
    mov     ah, 9h
    int     21h

check_MCA:
    mov     eax, dword ptr _features_edx

```

```

        and     eax, MCA_FLAG           ; check for MCA
        jz     check_CMOV
        mov     dx, offset mca_msg
        mov     ah, 9h
        int     21h

check_CMOV:
        mov     eax, dword ptr _features_edx
        and     eax, CMOV_FLAG         ; check for CMOV
        jz     check_PAT
        mov     dx, offset cmov_msg
        mov     ah, 9h
        int     21h

check_PAT:
        mov     eax, dword ptr _features_edx
        and     eax, PAT_FLAG
        jz     check_PSE36
        mov     dx, offset pat_msg
        mov     ah, 9h
        int     21h

check_PSE36:
        mov     eax, dword ptr _features_edx
        and     eax, PSE36_FLAG
        jz     check_PSNUM
        mov     dx, offset pse36_msg
        mov     ah, 9h
        int     21h

check_PSNUM:
        mov     eax, dword ptr _features_edx
        and     eax, PSNUM_FLAG        ; check for processor serial number
        jz     check_CLFLUSH
        mov     dx, offset psnum_msg
        mov     ah, 9h
        int     21h

check_CLFLUSH:
        mov     eax, dword ptr _features_edx
        and     eax, CLFLUSH_FLAG     ; check for Cache Line Flush
        jz     check_DTS
        mov     dx, offset clflush_msg
        mov     ah, 9h
        int     21h

check_DTS:
        mov     eax, dword ptr _features_edx
        and     eax, DTS_FLAG         ; check for Debug Trace Store
        jz     check_ACPI
        mov     dx, offset dts_msg
        mov     ah, 9h
        int     21h

check_ACPI:
        mov     eax, dword ptr _features_edx
        and     eax, ACPI_FLAG        ; check for processor serial number
        jz     check_MMX
    
```

```

        mov     dx, offset acpi_msg
        mov     ah, 9h
        int     21h

check_MMX:
        mov     eax, dword ptr _features_edx
        and     eax, MMX_FLAG           ; check for MMX technology
        jz     check_FXSR
        mov     dx, offset mmx_msg
        mov     ah, 9h
        int     21h

check_FXSR:
        mov     eax, dword ptr _features_edx
        and     eax, FXSR_FLAG         ; check for FXSR
        jz     check_SSE
        mov     dx, offset fxsr_msg
        mov     ah, 9h
        int     21h

check_SSE:
        mov     eax, dword ptr _features_edx
        and     eax, SSE_FLAG         ; check for Streaming SIMD
        jz     check_SSE2           ; Extensions
        mov     dx, offset sse_msg
        mov     ah, 9h
        int     21h

check_SSE2:
        mov     eax, dword ptr _features_edx
        and     eax, SSE2_FLAG        ; check for Streaming SIMD
        jz     check_SS             ; Extensions 2
        mov     dx, offset sse2_msg
        mov     ah, 9h
        int     21h

check_SS:
        mov     eax, dword ptr _features_edx
        and     eax, SS_FLAG          ; check for Self Snoop
        jz     check_HTT
        mov     dx, offset ss_msg
        mov     ah, 9h
        int     21h

check_HTT:
        mov     eax, dword ptr _features_edx
        and     eax, HTT_FLAG         ; check for Hyper-Thread Technology
        jz     check_IA64

        mov     eax, dword ptr _features_ebx
        shr     eax, 16                ; Place the logical processor count in AL
        xor     ah, ah                ; clear AH.
        mov     ebx, dword ptr _dcp_cache_eax
        shr     ebx, 26                ; Place core count in BL (originally in EAX[31:26])
        and     bx, 3Fh                ; clear BL preserving the core count
        inc     bl
        div     bl
        cmp     al, 2

```

```

        jl         check_IA64

        mov     dx, offset htt_msg           ; Supports HTT
        mov     ah, 9h
        int     21h

check_IA64:
        mov     eax, dword ptr _features_edx
        and     eax, IA64_FLAG             ; check for IA64 capabilities
        jz     check_TM
        mov     dx, offset ia64_msg
        mov     ah, 9h
        int     21h

check_TM:
        mov     eax, dword ptr _features_edx
        and     eax, TM_FLAG              ; check for Thermal Monitor
        jz     check_PBE
        mov     dx, offset tm_msg
        mov     ah, 9h
        int     21h

check_PBE:
        mov     eax, dword ptr _features_edx
        and     eax, PBE_FLAG            ; check for Pending Break Event
        jz     check_sse3
        mov     dx, offset pbe_msg
        mov     ah, 9h
        int     21h

check_sse3:
        mov     eax, dword ptr _features_ecx
        and     eax, SSE3_FLAG           ; check for SSE3 instructions
        jz     check_monitor
        mov     dx, offset sse3_msg
        mov     ah, 9h
        int     21h

check_monitor:
        mov     eax, dword ptr _features_ecx
        and     eax, MONITOR_FLAG        ; check for monitor/mwait instructions
        jz     check_ds_cpl
        mov     dx, offset monitor_msg
        mov     ah, 9h
        int     21h

check_ds_cpl:
        mov     eax, dword ptr _features_ecx
        and     eax, DS_CPL_FLAG         ; check for Debug Store extensions qualified by CPL
        jz     check_EIST
        mov     dx, offset ds_cpl_msg
        mov     ah, 9h
        int     21h

check_EIST:
        mov     eax, dword ptr _features_ecx
        and     eax, EIST_FLAG           ; check for Enhanced SpeedStep Technology
        jz     check_TM2

```

```

        mov     dx, offset eist_msg
        mov     ah, 9h
        int     21h

check_TM2:
        mov     eax, dword ptr _features_ecx
        and     eax, TM2_FLAG           ; check for Thermal Monitor 2
        jz      check_SSSE3
        mov     dx, offset tm2_msg
        mov     ah, 9h
        int     21h

check_SSSE3:
        mov     eax, dword ptr _features_ecx
        and     eax, SSSE3_FLAG        ; check for SSSE3
        jz      check_CID
        mov     dx, offset ssse3_msg
        mov     ah, 9h
        int     21h

check_CID:
        mov     eax, dword ptr _features_ecx
        and     eax, CID_FLAG          ; check for L1 Context ID
        jz      check_CX16
        mov     dx, offset cid_msg
        mov     ah, 9h
        int     21h

check_CX16:
        mov     eax, dword ptr _features_edx
        and     eax, CX16_FLAG         ; check for CMPXCHG16B
        jz      check_XTPR
        mov     dx, offset cx16_msg
        mov     ah, 9h
        int     21h

check_XTPR:
        mov     eax, dword ptr _features_ecx
        and     eax, XTPR_FLAG         ; check for echo Task Priority
        jz      check_DCA
        mov     dx, offset xtpr_msg
        mov     ah, 9h
        int     21h

check_DCA:
        mov     eax, dword ptr _features_ecx
        and     eax, DCA_FLAG          ; check for Direct Cache Access
        jz      check_LAHF
        mov     dx, offset dca_msg
        mov     ah, 9h
        int     21h

check_LAHF:
        mov     eax, dword ptr _ext_funct_1_ecx
        and     eax, LAHF_FLAG         ; check for LAHF/SAHF instructions
        jz      check_SYSCALL
        mov     dx, offset LAHF_msg
        mov     ah, 9h

```

```

        int      21h

check_SYSCALL:
        mov     eax, dword ptr _ext_funct_1_edx
        and     eax, SYSCALL_FLAG      ; check for SYSCALL/SYSRET instructions
        jz     check_XD
        mov     dx, offset syscall_msg
        mov     ah, 9h
        int     21h

check_XD:
        mov     eax, dword ptr _ext_funct_1_edx
        and     eax, XD_FLAG           ; check for echo Task Priority
        jz     check_EM64T
        mov     dx, offset xd_bit_msg
        mov     ah, 9h
        int     21h

check_EM64T:
        mov     eax, dword ptr _ext_funct_1_edx
        and     eax, EM64T_FLAG       ; check for echo Task Priority
        jz     end_print
        mov     dx, offset em64t_msg
        mov     ah, 9h
        int     21h

        jmp    end_print

not_GenuineIntel:
        mov     dx, offset not_intel
        mov     ah, 9h
        int     21h

end_print:
        mov     dx, offset cr_lf
        mov     ah, 9h
        int     21h
        ret

print    endp

        end start

```

Example 5. Processor Identification Procedure in the C Language

```

/* FILENAME: CPUID3.C */
/* Copyright (c) Intel Corporation 1994-2005 */
/*
/* This program has been developed by Intel Corporation. Intel has
/* various intellectual property rights which it may assert under
/* certain circumstances, such as if another manufacturer's
/* processor mis-identifies itself as being "GenuineIntel" when
/* the CPUID instruction is executed.
/*
/* Intel specifically disclaims all warranties, express or implied,
/* and all liability, including consequential and other indirect
/* damages, for the use of this program, including liability for
/* infringement of any proprietary rights, and including the
/* warranties of merchantability and fitness for a particular
/* purpose. Intel does not assume any responsibility for any
/* errors which may appear in this program nor any responsibility
/* to update it.
/*
/*
/* This program contains three parts:
/* Part 1: Identifies CPU type in the variable _cpu_type:
/*
/* Part 2: Identifies FPU type in the variable _fpu_type:
/*
/* Part 3: Prints out the appropriate message.
/*
/* This program has been tested with the Microsoft Developer Studio.
/* If this code is compiled with no options specified and linked
/* with the cpuid3a module, it correctly identifies the current
/* Intel 8086/8088, 80286, 80386, 80486, Pentium(R), Pentium(R) Pro,
/* Pentium(R) II, Pentium(R) II Xeon(R), Pentium(R) II OverDrive(R),
/* Intel(R) Celeron(R), Pentium(R) III processors, Pentium(R) III Xeon(R)
/* processors, Pentium(R) 4 processors and Intel(R) Xeon(R) processors
*/

#define FPU_FLAG      0x0001
#define VME_FLAG     0x0002
#define DE_FLAG      0x0004
#define PSE_FLAG     0x0008
#define TSC_FLAG     0x0010
#define MSR_FLAG     0x0020
#define PAE_FLAG     0x0040
#define MCE_FLAG     0x0080
#define CX8_FLAG     0x0100
#define APIC_FLAG    0x0200
#define SEP_FLAG     0x0800
#define MTRR_FLAG    0x1000
#define PGE_FLAG     0x2000
#define MCA_FLAG     0x4000
#define CMOV_FLAG    0x8000
#define PAT_FLAG     0x10000
#define PSE36_FLAG   0x20000
#define PSNUM_FLAG   0x40000
#define CLFLUSH_FLAG 0x80000
#define DTS_FLAG     0x200000
#define ACPI_FLAG    0x400000
#define MMX_FLAG     0x800000
#define FXSR_FLAG    0x1000000
#define SSE_FLAG     0x2000000
#define SSE2_FLAG    0x4000000
#define SS_FLAG      0x8000000
#define HTT_FLAG     0x10000000
#define TM_FLAG      0x20000000
#define IA64_FLAG    0x40000000

```

```

#define PBE_FLAG      0x80000000
#define SSE3_FLAG    0x0001
#define MONITOR_FLAG 0x0008
#define DS_CPL_FLAG  0x0010
#define EIST_FLAG    0x0080
#define TM2_FLAG     0x0100
#define SSSE3_FLAG   0x0200
#define CID_FLAG     0x0400
#define CX16_FLAG    0x2000
#define XTPR_FLAG    0x4000
#define DCA_FLAG     0x40000

#define LAHF_FLAG    0x00000001

#define SYSCALL_FLAG 0x00000800
#define XD_FLAG      0x00100000
#define EM64T_FLAG   0x20000000

extern char cpu_type;
extern char fpu_type;
extern char cpuid_flag;
extern char intel_CPU;
extern char vendor_id[12];
extern long cpu_signature;
extern long features_ecx;
extern long features_edx;
extern long features_ebx;
extern long cache_eax;
extern long cache_ebx;
extern long cache_ecx;
extern long cache_edx;
extern long dcp_cache_eax;
extern long dcp_cache_ebx;
extern long dcp_cache_ecx;
extern long dcp_cache_edx;
extern char brand_string[48];
extern int brand_id;

long cache_temp;
long celeron_flag;
long pentiumxeon_flag;

struct brand_entry {
    long brand_value;
    char *brand_string;
};

#define brand_table_size 15

struct brand_entry brand_table[brand_table_size] = {
    0x01, " Genuine Intel(R) Celeron(R) processor",
    0x02, " Genuine Intel(R) Pentium(R) III processor",
    0x03, " Genuine Intel(R) Pentium(R) III Xeon(R) processor",
    0x04, " Genuine Intel(R) Pentium(R) III processor",
    0x06, " Genuine Mobile Intel(R) Pentium(R) III Processor - M",
    0x07, " Genuine Mobile Intel(R) Celeron(R) processor",
    0x08, " Genuine Intel(R) Pentium(R) 4 processor",
    0x09, " Genuine Intel(R) Pentium(R) 4 processor",
    0x0A, " Genuine Intel(R) Celeron(R) processor",
    0x0B, " Genuine Intel(R) Xeon(R) processor",
    0x0C, " Genuine Intel(R) Xeon(R) Processor MP",
    0x0E, " Genuine Mobile Intel(R) Pentium(R) 4 Processor - M",
    0x0F, " Genuine Mobile Intel(R) Celeron(R) processor",
    0x11, " Mobile Genuine Intel(R) processor",
    0x12, " Genuine Mobile Intel(R) Celeron(R) M processor",
    0x13, " Genuine Mobile Intel(R) Celeron(R) processor",
    0x14, " Genuine Intel(R) Celeron(R) processor",

```

```

0x15, " Mobile Genuine Intel(R) processor",
0x16, " Genuine Intel(R) Pentium(R) M processor"
0x17, " Genuine Mobile Intel(R) Celeron(R) processor",
};

int main() {
    get_cpu_type();
    get_fpu_type();
    print();
    return(0);
}

int print() {
    int brand_index = 0;

    printf("This system has a");
    if (cpuid_flag == 0) {
        switch (cpu_type) {
            case 0:
                printf("n 8086/8088 processor");
                if (fpu_type) printf(" and an 8087 math coprocessor");
                break;
            case 2:
                printf("n 80286 processor");
                if (fpu_type) printf(" and an 80287 math coprocessor");
                break;
            case 3:
                printf("n 80386 processor");
                if (fpu_type == 2)
                    printf(" and an 80287 math coprocessor");
                else if (fpu_type)
                    printf(" and an 80387 math coprocessor");
                break;
            case 4:
                if (fpu_type)
                    printf("n 80486DX, 80486DX2 processor or 80487SX math coprocessor");
                else
                    printf("n 80486SX processor");
                break;
            default:
                printf("n unknown processor");
        }
    }
    else {
        /* using cpuid instruction */
        if (intel_CPU) {
            if (brand_string[0]) {
                brand_index = 0;
                while ((brand_string[brand_index] == ' ') && (brand_index < 48))
                    brand_index++;
                if (brand_index != 48)
                    printf(" %s", &brand_string[brand_index]);
            }
            else if (cpu_type == 4) {
                switch ((cpu_signature >> 4) & 0xf) {
                    case 0:
                    case 1:
                        printf(" Genuine Intel486(TM) DX processor");
                        break;
                    case 2:
                        printf(" Genuine Intel486(TM) SX processor");
                        break;
                    case 3:
                        printf(" Genuine IntelDX2(TM) processor");
                        break;
                    case 4:
                        printf(" Genuine Intel486(TM) processor");
                }
            }
        }
    }
}

```

```

    break;
case 5:
    printf(" Genuine IntelSX2(TM) processor");
    break;
case 7:
    printf(" Genuine Write-Back Enhanced \
    IntelDX2(TM) processor");
    break;
case 8:
    printf(" Genuine IntelDX4(TM) processor");
    break;
default:
    printf(" Genuine Intel486(TM) processor");
}
}
else if (cpu_type == 5)
    printf(" Genuine Intel Pentium(R) processor");
else if ((cpu_type == 6) && (((cpu_signature >> 4) & 0xf) == 1))
    printf(" Genuine Intel Pentium(R) Pro processor");
else if ((cpu_type == 6) && (((cpu_signature >> 4) & 0xf) == 3))
    printf(" Genuine Intel Pentium(R) II processor, model 3");
else if (((cpu_type == 6) && (((cpu_signature >> 4) & 0xf) == 5)) ||
        ((cpu_type == 6) && (((cpu_signature >> 4) & 0xf) == 7)))
{
    celeron_flag = 0;
    pentiumxeon_flag = 0;
    cache_temp = cache_eax & 0xFF000000;
    if (cache_temp == 0x40000000)
        celeron_flag = 1;
    if ((cache_temp >= 0x44000000) && (cache_temp <= 0x45000000))
        pentiumxeon_flag = 1;

    cache_temp = cache_eax & 0xFF0000;
    if (cache_temp == 0x400000)
        celeron_flag = 1;
    if ((cache_temp >= 0x440000) && (cache_temp <= 0x450000))
        pentiumxeon_flag = 1;

    cache_temp = cache_eax & 0xFF00;
    if (cache_temp == 0x4000)
        celeron_flag = 1;
    if ((cache_temp >= 0x4400) && (cache_temp <= 0x4500))
        pentiumxeon_flag = 1;

    cache_temp = cache_ebx & 0xFF000000;
    if (cache_temp == 0x40000000)
        celeron_flag = 1;
    if ((cache_temp >= 0x44000000) && (cache_temp <= 0x45000000))
        pentiumxeon_flag = 1;

    cache_temp = cache_ebx & 0xFF0000;
    if (cache_temp == 0x400000)
        celeron_flag = 1;
    if ((cache_temp >= 0x440000) && (cache_temp <= 0x450000))
        pentiumxeon_flag = 1;

    cache_temp = cache_ebx & 0xFF00;
    if (cache_temp == 0x4000)
        celeron_flag = 1;
    if ((cache_temp >= 0x4400) && (cache_temp <= 0x4500))
        pentiumxeon_flag = 1;

    cache_temp = cache_ebx & 0xFF;
    if (cache_temp == 0x40)
        celeron_flag = 1;
    if ((cache_temp >= 0x44) && (cache_temp <= 0x45))
        pentiumxeon_flag = 1;
}

```

```

cache_temp = cache_ecx & 0xFF000000;
if (cache_temp == 0x40000000)
    celeron_flag = 1;
if ((cache_temp >= 0x44000000) && (cache_temp <= 0x45000000))
    pentiumxeon_flag = 1;

cache_temp = cache_ecx & 0xFF0000;
if (cache_temp == 0x400000)
    celeron_flag = 1;
if ((cache_temp >= 0x440000) && (cache_temp <= 0x450000))
    pentiumxeon_flag = 1;

cache_temp = cache_ecx & 0xFF00;
if (cache_temp == 0x4000)
    celeron_flag = 1;
if ((cache_temp >= 0x4400) && (cache_temp <= 0x4500))
    pentiumxeon_flag = 1;

cache_temp = cache_ecx & 0xFF;
if (cache_temp == 0x40)
    celeron_flag = 1;
if ((cache_temp >= 0x44) && (cache_temp <= 0x45))
    pentiumxeon_flag = 1;

cache_temp = cache_edx & 0xFF000000;
if (cache_temp == 0x40000000)
    celeron_flag = 1;
if ((cache_temp >= 0x44000000) && (cache_temp <= 0x45000000))
    pentiumxeon_flag = 1;

cache_temp = cache_edx & 0xFF0000;
if (cache_temp == 0x400000)
    celeron_flag = 1;
if ((cache_temp >= 0x440000) && (cache_temp <= 0x450000))
    pentiumxeon_flag = 1;

cache_temp = cache_edx & 0xFF00;
if (cache_temp == 0x4000)
    celeron_flag = 1;
if ((cache_temp >= 0x4400) && (cache_temp <= 0x4500))
    pentiumxeon_flag = 1;

cache_temp = cache_edx & 0xFF;
if (cache_temp == 0x40)
    celeron_flag = 1;
if ((cache_temp >= 0x44) && (cache_temp <= 0x45))
    pentiumxeon_flag = 1;

if (celeron_flag == 1)
    printf(" Genuine Intel Celeron(R) processor, model 5");
else
{
    if (pentiumxeon_flag == 1) {
        if (((cpu_signature >> 4) & 0x0f) == 5)
            printf(" Genuine Intel Pentium(R) II Xeon(R) processor");
        else
            printf(" Genuine Intel Pentium(R) III Xeon(R) processor,");
        printf(" model 7");
    }
    else {
        if (((cpu_signature >> 4) & 0x0f) == 5) {
            printf(" Genuine Intel Pentium(R) II processor, model 5 ");
            printf("or Intel Pentium(R) II Xeon(R) processor");
        }
        else {
            printf(" Genuine Intel Pentium(R) III processor, model 7");
            printf(" or Intel Pentium(R) III Xeon(R) processor,");
            printf(" model 7");
        }
    }
}

```

```

    }
  }
}
else if ((cpu_type == 6) && (((cpu_signature >> 4) & 0xf) == 6))
  printf(" Genuine Intel Celeron(R) processor, model 6");
else if ((features_ebx & 0xff) != 0) {
  while ((brand_index < brand_table_size) &&
        ((features_ebx & 0xff) != brand_table[brand_index].brand_value))
    brand_index++;
  if (brand_index < brand_table_size) {
    if ((cpu_signature == 0x6B1) &&
        (brand_table[brand_index].brand_value == 0x3))
      printf(" Genuine Intel(R) Celeron(R) processor");
    else if ((cpu_signature < 0xF13) &&
             (brand_table[brand_index].brand_value == 0x0B))
      printf(" Genuine Intel(R) Xeon(R) processor MP");
    else if ((cpu_signature < 0xF13) &&
             (brand_table[brand_index].brand_value == 0x0E))
      printf(" Genuine Intel(R) Xeon(R) processor");
    else
      printf("%s", brand_table[brand_index].brand_string);
  }
  else
    printf("n unknown Genuine Intel processor");
}
else
  printf("n unknown Genuine Intel processor");
printf("\nProcessor Family: %X", cpu_type);
if (cpu_type == 0xf)
  printf("n Extended Family: %x", (cpu_signature >> 20) & 0xff);
printf("nModel:      %X", (cpu_signature >> 4) & 0xf);
if (((cpu_signature >> 4) & 0xf) == 0xf)
  printf("n Extended Model: %x", (cpu_signature >> 16) & 0xf);
printf("nStepping:    %X\n", cpu_signature & 0xf);
if (cpu_signature & 0x1000)
  printf("nThe processor is an OverDrive(R) processor");
else if (cpu_signature & 0x2000)
  printf("nThe processor is the upgrade processor in a dual processor system");
if (features_edx & FPU_FLAG)
  printf("nThe processor contains an on-chip FPU");
if (features_edx & VME_FLAG)
  printf("nThe processor supports Virtual Mode Extensions");
if (features_edx & DE_FLAG)
  printf("nThe processor supports the Debugging Extensions");
if (features_edx & PSE_FLAG)
  printf("nThe processor supports Page Size Extensions");
if (features_edx & TSC_FLAG)
  printf("nThe processor supports Time Stamp Counter");
if (features_edx & MSR_FLAG)
  printf("nThe processor supports Model Specific Registers");
if (features_edx & PAE_FLAG)
  printf("nThe processor supports Physical Address Extension");
if (features_edx & MCE_FLAG)
  printf("nThe processor supports Machine Check Exceptions");
if (features_edx & CX8_FLAG)
  printf("nThe processor supports the CMPXCHG8B instruction");
if (features_edx & APIC_FLAG)
  printf("nThe processor contains an on-chip APIC");
if (features_edx & SEP_FLAG) {
  if ((cpu_type == 6) && ((cpu_signature & 0xff) < 0x33))
    printf("nThe processor does not support the Fast System Call");
  else
    printf("nThe processor supports the Fast System Call");
}
if (features_edx & MTRR_FLAG)
  printf("nThe processor supports the Memory Type Range Registers");
if (features_edx & PGE_FLAG)

```

```

    printf("\nThe processor supports Page Global Enable");
if (features_edx & MCA_FLAG)
    printf("\nThe processor supports the Machine Check Architecture");
if (features_edx & CMOV_FLAG)
    printf("\nThe processor supports the Conditional Move Instruction");
if (features_edx & PAT_FLAG)
    printf("\nThe processor supports the Page Attribute Table");
if (features_edx & PSE36_FLAG)
    printf("\nThe processor supports 36-bit Page Size Extension");
if (features_edx & PSNUM_FLAG)
    printf("\nThe processor supports the processor serial number");
if (features_edx & CLFLUSH_FLAG)
    printf("\nThe processor supports the CLFLUSH instruction");
if (features_edx & DTS_FLAG)
    printf("\nThe processor supports the Debug Trace Store feature");
if (features_edx & ACPI_FLAG)
    printf("\nThe processor supports ACPI registers in MSR space");
if (features_edx & MMX_FLAG)
    printf("\nThe processor supports Intel Architecture MMX(TM) technology");
if (features_edx & FXSR_FLAG)
    printf("\nThe processor supports the Fast floating point save and restore");
if (features_edx & SSE_FLAG)
    printf("\nThe processor supports the Streaming SIMD extensions to the Intel Architecture");
if (features_edx & SSE2_FLAG)
    printf("\nThe processor supports the Streaming SIMD extensions 2 instructions");
if (features_edx & SS_FLAG)
    printf("\nThe processor supports Self-Snoop");
if ((features_edx & HTT_FLAG) &&
    (((features_ebx >> 16) & 0x0FF) / (((dcp_cache_eax >> 26) & 0x3F) + 1) > 1))
    printf("\nThe processor supports Hyper-Threading Technology");
if (features_edx & TM_FLAG)
    printf("\nThe processor supports the Thermal Monitor");
if (features_edx & IA64_FLAG)
    printf("\n%s\n%s", "The processor is a member of the Intel(R) Itanium(R) processor family ",
        "executing IA32 emulation mode");
if (features_edx & PBE_FLAG)
    printf("\nThe processor supports Pending Break Event signaling");
if (features_ecx & SSE3_FLAG)
    printf("\nThe processor supports the Streaming SIMD extensions 3 instructions");
if (features_ecx & MONITOR_FLAG)
    printf("\nThe processor supports the MONITOR and MWAIT instructions");
if (features_ecx & DS_CPL_FLAG)
    printf("\nThe processor supports Debug Store extensions for branch message storage by CPL");
if (features_ecx & EIST_FLAG)
    printf("\nThe processor supports Enhanced SpeedStep(TM) Technology");
if (features_ecx & TM2_FLAG)
    printf("\nThe processor supports the Thermal Monitor 2");
if (features_ecx & SSSE3_FLAG)
    printf("\nThe processor supports the Supplemental Streaming SIMD extensions 3 instructions");
if (features_ecx & CID_FLAG)
    printf("\nThe processor supports L1 Data Cache Context ID");
if (features_ecx & CX16_FLAG)
    printf("\nThe processor supports the CMPXCHG16B instruction");
if (features_ecx & XTPR_FLAG)
    printf("\nThe processor supports transmitting TPR messages");
if (features_ecx & DCA_FLAG)
    printf("\nThe processor supports the Direct Cache Access feature");
if (ext_funct_1_ecx & LAHF_FLAG)
    printf("\nThe processor supports the LAHF & SAHF instructions");
if (ext_funct_1_edx & SYSCALL_FLAG)
    printf("\nThe processor supports the SYSCALL & SYSRET instructions");
if (ext_funct_1_edx & XD_FLAG)
    printf("\nThe processor supports the Execute Disable Bit ");
if (ext_funct_1_edx & EM64T_FLAG)
    printf("\nThe processor supports Intel(R) Extended Memory 64 Technology ");
}
else {
    printf("t least an 80486 processor. ");
}

```



```
        printf("\nIt does not contain a Genuine Intel part and as a result, the ");  
        printf("\nCPUID detection information cannot be determined at this time.");  
    }  
}   
printf("\n");  
return(0);  
}
```

Example 6. Instruction Extension Detection Using Exception Handlers

```

// FILENAME: FEATURES.CPP
// Copyright (c) Intel Corporation 2000-2005
//
// This program has been developed by Intel Corporation. Intel has
// various intellectual property rights which it may assert under
// certain circumstances, such as if another manufacturer's
// processor mis-identifies itself as being "GenuineIntel" when
// the CPUID instruction is executed.
//
// Intel specifically disclaims all warranties, express or implied,
// and all liability, including consequential and other indirect
// damages, for the use of this program, including liability for
// infringement of any proprietary rights, and including the
// warranties of merchantability and fitness for a particular
// purpose. Intel does not assume any responsibility for any
// errors which may appear in this program nor any responsibility
// to update it.
//
#include "stdio.h"
#include "string.h"
#include "excpt.h"

// The follow code sample demonstrate using exception handlers to identify available IA-32 features,
// The sample code Identifies IA-32 features such as support for Streaming SIMD Extensions 3,
// Streaming SIMD Extensions 2 (SSE2), support for Streaming SIMD Extensions (SSE),
// support for MMX (TM) instructions.
// This technique can be used safely to determined IA-32 features and provide
// forward compatibility to run optimally on future IA-32 processors.
// Please note that the technique of trapping invalid opcodes is not suitable
// for identifying the processor family and model.

int main(int argc, char* argv[])
{
    char sSupportSSE3[80]="Don't know";
    char sSupportSSE2[80]="Don't know";
    char sSupportSSE[80]="Don't know";
    char sSupportMMX[80]="Don't know";

    // To identify whether SSE3, SSE2, SSE, or MMX instructions are supported on an x86 compatible
    // processor in a fashion that will be compatible to future IA-32 processors,
    // The following tests are performed in sequence: (This sample code will assume cpuid
    // instruction is supported by the target processor.)
    // 1. Test whether target processor is a Genuine Intel processor, if yes
    // 2. Test if executing an SSE3 instruction would cause an exception, if no exception occurs,
    // SSE3 is supported; if exception occurs,
    // 3. Test if executing an SSE2 instruction would cause an exception, if no exception occurs,
    // SSE2 is supported; if exception occurs,
    // 4. Test if executing an SSE instruction would cause an exception, if no exception occurs,
    // SSE is supported; if exception occurs,
    // 5. Test if executing an MMX instruction would cause an exception, if no exception occurs,
    // MMX instruction is supported,
    // if exception occurs, MMX instruction is not supported by this processor.

    // For clarity, the following stub function "IsGenuineIntelProcessor()" is not shown in this example,

```

```

// The function "IsGenuineIntelProcessor()" can be adapted from the sample code implementation
// of the assembly procedure "_get_cpu_type". The purpose of this stub function is to examine
// whether the Vendor ID string, which is returned when executing
// cpuid instruction with EAX = 0, indicates the processor is a genuine Intel processor.

if (IsGenuineIntelProcessor())
{
    // First, execute an SSE3 instruction to see whether an exception occurs

    __try
    {
        __asm {
            haddpd xmm1, xmm2 // this is an instruction available in SSE3
            // _emit 0x66 __asm _emit 0x0F __asm _emit 0x7C __asm _emit 0xCA

            strcpy(&sSupportSSE3[0], "Yes"); // No exception executing an SSE3 instruction
        }

        __except( EXCEPTION_EXECUTE_HANDLER ) // SSE3 exception handler
        {
            // exception occurred when executing an SSE3 instruction
            strcpy(&sSupportSSE3[0], "No");
        }

        // Second, execute an SSE2 instruction to see whether an exception occurs

        __try
        {
            __asm {
                paddq xmm1, xmm2 // this is an instruction available in SSE2
            }
            strcpy(&sSupportSSE2[0], "Yes"); // No exception executing an SSE2 instruction
        }

        __except( EXCEPTION_EXECUTE_HANDLER ) // SSE2 exception handler
        {
            // exception occurred when executing an SSE2 instruction
            strcpy(&sSupportSSE2[0], "No");
        }

        // Third, execute an SSE instruction to see whether an exception occurs

        __try
        {
            __asm {
                orps xmm1, xmm2 // this is an instruction available in SSE
                // __asm _emit 0x66 __asm _emit 0x0f __asm _emit 0x57 __asm _emit 0xc0
            }
            strcpy(&sSupportSSE[0], "Yes"); // no exception executing an SSE instruction
        }

        __except( EXCEPTION_EXECUTE_HANDLER ) // SSE exception handler
        {
            // exception occurred when executing an SSE instruction
            strcpy(&sSupportSSE[0], "No");
        }
    }
}

```



```
// Fourth, execute an MMX instruction to see whether an exception occurs

__try
{
    __asm {
        emms    // this is an instruction available in MMX    }
        strcpy(&SupportMMX[0], "Yes");    // no exception executing an MMX instruction
    }

    __except( EXCEPTION_EXECUTE_HANDLER )    // MMX exception handler
    {
        // exception occurred when executing an MMX instruction
        strcpy(&SupportMMX[0], "No");
    }
}

printf("This Processor supports the following instruction extensions: \n");
printf("SSE3 instruction: \t\t%s \n", &SupportSSE3[0]);
printf("SSE2 instruction: \t\t%s \n", &SupportSSE2[0]);
printf("SSE instruction: \t\t%s \n", &SupportSSE[0]);
printf("MMX instruction: \t\t%s \n", &SupportMMX[0]);
return 0;
}
```



Example 7. Detecting Denormals-Are-Zero Support

```

;
; Filename: DAZDTECT.ASM
; Copyright (c) Intel Corporation 2001-2005
;
; This program has been developed by Intel Corporation. Intel
; has various intellectual property rights which it may assert
; under certain circumstances, such as if another
; manufacturer's processor mis-identifies itself as being
; "GenuineIntel" when the CPUID instruction is executed.
;
; Intel specifically disclaims all warranties, express or
; implied, and all liability, including consequential and other
; indirect damages, for the use of this program, including
; liability for infringement of any proprietary rights,
; and including the warranties of merchantability and fitness
; for a particular purpose. Intel does not assume any
; responsibility for any errors which may appear in this program
; nor any responsibility to update it.
;
; This example assumes the system has booted DOS.
; This program runs in Real mode.
;
;*****
;
; This program was assembled using MASM 6.14.8444.
;
; This program performs the following 8 steps to determine if the
; processor supports the SSE/SSE2 DAZ mode.
;
; Step 1. Execute the CPUID instruction with an input value of EAX=0 and
; ensure the vendor-ID string returned is "GenuineIntel".
;
; Step 2. Execute the CPUID instruction with EAX=1. This will load the
; EDX register with the feature flags.
;
; Step 3. Ensure that the FXSR feature flag (EDX bit 24) is set.
; This indicates the processor supports the FXSAVE and FXRSTOR
; instructions.
;
; Step 4. Ensure that the XMM feature flag (EDX bit 25) or the EMM feature
; flag (EDX bit 26) is set. This indicates that the processor supports
; at least one of the SSE/SSE2 instruction sets and its MXCSR control
; register.
;
; Step 5. Zero a 16-byte aligned, 512-byte area of memory.
; This is necessary since some implementations of FXSAVE do not
; modify reserved areas within the image.
;
; Step 6. Execute an FXSAVE into the cleared area.
;
; Step 7. Bytes 28-31 of the FXSAVE image are defined to contain the
; MXCSR_MASK. If this value is 0, then the processor's MXCSR_MASK
; is 0xFFBF, otherwise MXCSR_MASK is the value of this dword.
;
; Step 8. If bit 6 of the MXCSR_MASK is set, then DAZ is supported.
;
;*****
;
; .DOSSEG
; .MODEL small, c
; .STACK
;
; Data segment

```

```

        .DATA

buffer          DB      512+16 DUP (0)

not_intel      DB      "This is not an Genuine Intel processor.", 0Dh, 0Ah, "$"
noSSEorSSE2   DB      "Neither SSE or SSE2 extensions are supported.", 0Dh, 0Ah, "$"
no_FXSAVE     DB      "FXSAVE not supported.", 0Dh, 0Ah, "$"
daz_mask_clear DB      "DAZ bit in MXCSR_MASK is zero (clear).", 0Dh, 0Ah, "$"
no_daz        DB      "DAZ mode not supported.", 0Dh, 0Ah, "$"
supports_daz  DB      "DAZ mode supported.", 0Dh, 0Ah, "$"

; Code segment

        .CODE
        .686p
        .XMM

dazdect PROC NEAR

        .startup                                ; Allow assembler to create code that
                                                ; initializes stack and data segment
                                                ; registers

; Step 1.

        ; Verify Genuine Intel processor by checking CPUID generated vendor ID

        mov     eax, 0
        cpuid

        cmp     ebx, 'Genu'                    ; Compare first 4 letters of Vendor ID
        jne     notIntelprocessor              ; Jump if not Genuine Intel processor
        cmp     edx, 'ineI'                    ; Compare next 4 letters of Vendor ID
        jne     notIntelprocessor              ; Jump if not Genuine Intel processor
        cmp     ecx, 'telI'                    ; Compare last 4 letters of Vendor ID
        jne     notIntelprocessor              ; Jump if not Genuine Intel processor

; Step 2, 3, and 4

        ; Get CPU feature flags
        ; Verify FXSAVE and either SSE or
        ; SSE2 are supported

        mov     eax, 1
        cpuid
        bt     edx, 24t                        ; Feature Flags Bit 24 is FXSAVE support
        jnc     noFxsave                       ; jump if FXSAVE not supported

        bt     edx, 25t                        ; Feature Flags Bit 25 is SSE support
        jc     sse_or_sse2_supported          ; jump if SSE is not supported

        bt     edx, 26t                        ; Feature Flags Bit 26 is SSE2 support
        jnc     no_sse_sse2                   ; jump if SSE2 is not supported

sse_or_sse2_supported:

        ; FXSAVE requires a 16-byte aligned
        ; buffer so get offset into buffer

        mov     bx, OFFSET buffer              ; Get offset of the buffer into bx
        and     bx, 0FFF0h
        add     bx, 16t                        ; DI is aligned at 16-byte boundary

; Step 5.

        ; Clear the buffer that will be

```

```

        ; used for FXSAVE data

        push    ds
        pop     es
        mov     di, bx
        xor     ax, ax
        mov     cx, 512/2
        cld
        rep     stosw                ; Fill at FXSAVE buffer with zeroes

; Step 6.

        fxsave [bx]

; Step 7.

        mov     eax, DWORD PTR [bx][28t] ; Get MXCSR_MASK
        cmp     eax, 0                   ; Check for valid mask
        jne     check_mxcsr_mask
        mov     eax, 0FFBFh              ; Force use of default MXCSR_MASK

check_mxcsr_mask:
; EAX contains MXCSR_MASK from FXSAVE buffer or default mask

; Step 8.

        bt     eax, 6                    ; MXCSR_MASK Bit 6 is DAZ support
        jc     supported                 ; Jump if DAZ supported

        mov     dx, OFFSET daz_mask_clear
        jmp     notSupported

supported:
        mov     dx, OFFSET supports_daz ; Indicate DAZ is supported.
        jmp     print

notIntelProcessor:
        mov     dx, OFFSET not_intel    ; Assume not an Intel processor
        jmp     print

no_sse_sse2:
        mov     dx, OFFSET noSSEorSSE2 ; Setup error message assuming no SSE/SSE2
        jmp     notSupported

noFxsave:
        mov     dx, OFFSET no_FXSAVE

notSupported:
        mov     ah, 09h                  ; Execute DOS print string function
        int     21h

        mov     dx, OFFSET no_daz

print:
        mov     ah, 09h                  ; Execute DOS print string function
        int     21h

exit:
        .exit                            ; Allow assembler to generate code
        ret                               ; that returns control to DOS

dazdtect ENDP

        END
    
```

Example 8. Frequency Calculation

```

;   Filename: CPUFREQ.ASM
;   Copyright(c) 2003 - 2006 by Intel Corporation
;
;   This program has been developed by Intel Corporation. Intel
;   has various intellectual property rights which it may assert
;   under certain circumstances, such as if another
;   manufacturer's processor mis-identifies itself as being
;   "GenuineIntel" when the CPUID instruction is executed.
;
;   Intel specifically disclaims all warranties, express or
;   implied, and all liability, including consequential and other
;   indirect damages, for the use of this program, including
;   liability for infringement of any proprietary rights,
;   and including the warranties of merchantability and fitness
;   for a particular purpose. Intel does not assume any
;   responsibility for any errors which may appear in this program
;   nor any responsibility to update it.
;
;   This example assumes the system has booted DOS.
;   This program runs in Real mode.
;
;*****
;
;   This program was assembled using MASM 6.14.
;
;   This program performs the following 8 steps to determine the
;   processor actual frequency.
;
; Step 1. Execute the CPUID instruction with an input value of
;           EAX=0 and ensure the vendor-ID string returned is
;           "GenuineIntel".
; Step 2. Execute the CPUID instruction with EAX=1 to load the
;           EDX register with the feature flags.
; Step 3. Ensure that the TSC feature flag (EDX bit 4) is set.
;           This indicates the processor supports the Time Stamp
;           Counter and RDTSC instruction.
; Step 4. Read the TSC at the beginning of the reference period
; Step 5. Read the TSC at the end of the reference period.
; Step 6. Compute the TSC delta from the beginning and ending
;           of the reference period.
; Step 7. Compute the actual frequency by dividing the TSC
;           delta by the reference period.
;*****

.DOSSEG
.MODEL small, pascal
.STACK

include cpufreq.inc

SEG_BIOS_DATA_AREA    EQU    040h
OFFSET_TICK_COUNT    EQU    06ch
INTERVAL_IN_TICKS    EQU    091t    ; 18.2 * 5 seconds

PMG_PST_MCNT        EQU    0E7h

; Code segment

.CODE
.686p

;-----
; Function    cpufreq
; This function calculates the Actual and Rounded frequency of

```

```

; the processor.
;
; Input:  None
;
; Destroys: EAX, EBX, ECX, EDX
;
; Output: AX = Measured Frequency
;         BX = Reported Frequency
;
; Assumes: Stack is available
;
;-----
cpufreq PROC NEAR
    local tscLoDword:DWORD, \
           tscHiDword:DWORD, \
           mhz:WORD, \
           Nearest66Mhz:WORD, \
           Nearest50Mhz:WORD, \
           delta66Mhz:WORD

; Step 1.

; Verify Genuine Intel processor by checking CPUID generated
; vendor ID

    mov     eax, 0
    cpuid

    cmp     ebx, 'uneG'           ; Check VendorID = GenuineIntel
    jne     exit                 ; not Genuine Intel processor
    cmp     edx, 'Ieni'
    jne     exit
    cmp     ecx, 'letn'
    jne     exit

; Step 2 and 3

; Get CPU feature flags
; Verify TSC is supported

    mov     eax, 1
    cpuid
    bt     edx, 4t                ; Flags Bit 4 is TSC support
    jnc     exit                 ; jump if TSC not supported

    and     eax, 0FFF3FF0h
    cmp     eax, 000006F0h
    je     _4a_to_5a

    push   SEG_BIOS_DATA_AREA
    pop     es
    mov     si, OFFSET_TICK_COUNT ; The BIOS tick count updates
    mov     ebx, DWORD PTR es:[si] ; ~ 18.2 times per second.

wait_for_new_tick:

    cmp     ebx, DWORD PTR es:[si] ; Wait for tick count change
    je     wait_for_new_tick

; Step 4
; **Timed interval starts**

; Read CPU time stamp
    rdtsc                       ; Read & save TSC immediately
    mov     tscLoDword, eax      ; after a tick
    mov     tscHiDword, edx
    
```

```

; Set time delay value ticks.
    add     ebx, INTERVAL_IN_TICKS + 1

wait_for_elapsed_ticks:

    cmp     ebx, DWORD PTR es:[si]      ; Have we hit the delay?
    jne     wait_for_elapsed_ticks

; Step 5
    ; **Time interval ends**

    ; Read CPU time stamp immediately after tick delay reached.
    rdtsc

step_6:
; Step 6

    sub     eax, tscLoDword             ; Calculate TSC delta from
    sbb     edx, tscHiDword             ; beginning to end of
                                         ; interval

    jmp     step_7

_4a_to_5a:

    mov     ecx, PMG_PST_MCNT          ; MSR containing C0_MCNT
    xor     eax, eax
    xor     edx, edx

    push   SEG_BIOS_DATA_AREA
    pop     es
    mov     si, OFFSET_TICK_COUNT      ; The BIOS tick count updates
    mov     ebx, DWORD PTR es:[si]     ; ~ 18.2 times per second.

wait_for_new_tick_4a:
    cmp     ebx, DWORD PTR es:[si]     ; Wait for tick count change
    je      wait_for_new_tick_4a

; Step 4a
    ; **Timed interval starts**
    ; Zero the C0_MCNT
    wrmsr                                     ; Write 0 to C0_MCNT timer

    ; Set time delay value ticks.
    add     ebx, INTERVAL_IN_TICKS + 1

elapsed_ticks_4a:

    cmp     ebx, DWORD PTR es:[si]     ; Have we hit the delay?
    jne     elapsed_ticks_4a

; Step 5a
    ; **Time interval ends**
    ; Read C0_MCNT immediately after tick delay reached.
    rdmsr

; Step 7
    ;
    ; 54945 = (1 / 18.2) * 1,000,000 This adjusts for MHz.
    ; 54945*INTERVAL_IN_TICKS adjusts for number of ticks in
; interval
    ;
step_7:
    mov     ebx, 54945*INTERVAL_IN_TICKS
    div    ebx

```

```

; ax contains measured speed in MHz
    mov     mhz, ax

; Find nearest full/half multiple of 66/133 MHz
    xor     dx, dx
    mov     ax, mhz
    mov     bx, 3t
    mul     bx
    add     ax, 100t
    mov     bx, 200t
    div     bx
    mul     bx
    xor     dx, dx
    mov     bx, 3
    div     bx

; ax contains nearest full/half multiple of 66/100 MHz

    mov     Nearest66Mhz, ax
    sub     ax, mhz
    jge     delta66
    neg     ax                ; ax = abs(ax)

delta66:

; ax contains delta between actual and nearest 66/133 multiple
    mov     Delta66Mhz, ax

; Find nearest full/half multiple of 100 MHz
    xor     dx, dx
    mov     ax, mhz
    add     ax, 25t
    mov     bx, 50t
    div     bx
    mul     bx

; ax contains nearest full/half multiple of 100 MHz

    mov     Nearest50Mhz, ax
    sub     ax, mhz
    jge     delta50
    neg     ax                ; ax = abs(ax)

delta50:

; ax contains delta between actual and nearest 50/100 MHz
; multiple

    mov     bx, Nearest50Mhz
    cmp     ax, Delta66Mhz
    jb     useNearest50Mhz
    mov     bx, Nearest66Mhz

; Correction for 666 MHz (should be reported as 667 MHz)

    cmp     bx, 666
    jne     correct666
    inc     bx

correct666:
useNearest50MHz:

; bx contains nearest full/half multiple of 66/100/133 MHz

exit:

    mov     ax, mhz                ; Return the measured
                                    ; frequency in AX
    
```

```

ret
cpufreq ENDP
END

;-----
; Procedure      wordToDec
;               This routine will convert a word value into a 5 byte decimal
;               ascii string.
;
; Input:  decAddr = address to 5 byte location for converted string
;         (near address assumes DS as segment)
;         hexData = word value to be converted to hex ascii
;
; Destroys: ax, bx, cx
;
; Output:      5 byte converted hex string
;
; Assumes:     Stack is available
;-----

wordToDec PROC NEAR PUBLIC uses es,
            decAddr:WORD, hexData:WORD

    pusha
    mov     di, decAddr
    push   @data
    pop    es                                ; ES:DI -> 5-byte converted string

    mov     ax, hexData
    xor     dx, dx
    mov     bx, 10000t
    div    bx
    add     ax, 30h
    stosb

    mov     ax, dx
    xor     dx, dx
    mov     bx, 1000t
    div    bx
    add     ax, 30h
    stosb

    mov     ax, dx
    xor     dx, dx
    mov     bx, 100t
    div    bx
    add     ax, 30h
    stosb

    mov     ax, dx
    xor     dx, dx
    mov     bx, 10t
    div    bx
    add     ax, 30h
    stosb

```



```
        mov     ax, dx
        add     ax, 30h
        stosb

        popa
        ret

wordToDec     ENDP

        END
```